

WHEEL LOADERS

Group
W10

Operating weight
30 - 40T

STANDARD BUCKETS

Description: standard bucket with rear bar or screwed skids; ESCO/CAT J tooth system; direct fit on pins or a quick coupler; blades HB500; side bar HB400; bottom stripes HB400;

CODE	Width [mm]	Capacity SAE [L]	Option	Dedicated to
WGP-W10-5000L	3400	5000	LW/Z*	Volvo, parallel kinematics
WGP-W10-5500L	3400	5500	LW/Z*	Volvo, parallel kinematics
WGP-W10-6500L	3400	6500	LW/Z*	Volvo, parallel kinematics
WGP-W10-5400L	3400	5400	LW/Z*	Cat, kinematics type Z
WGP-W10-5700L	3400	5700	LW/Z*	Cat, kinematics type Z
WGP-W10-6000L	3400	6000	LW/Z*	Cat, kinematics type Z

*LW/Z - optional interchangeable blade / teeth

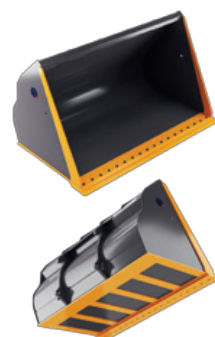


BUCKETS WITH INCREASED CAPACITY

Description: light material bucket max. 600kg/m³; blade HB500; bottom stripes HB400; side bar HB400; direct fit on pins or a quick coupler

CODE	Width [mm]	Capacity SAE [L]	Option
WLM-W10-7000L	3400	7000	LW*
WLM-W10-10000L	3700	10000	LW*
WLM-W10-12000L	3700	12000	LW*
WLM-W10-14000L	4000	14000	LW*
WLM-W10-16000L	4500	16000	LW*

*LW - optional interchangeable blade



WHEEL LOADERS

Group
W10

Operating weight
30 - 40T

ROCK BUCKETS

Description: rock bucket with screwed skids, grate to prevent scattering; ESCO/CAT J tooth system; direct fit on pins or a quick coupler; blades HB500; side bar HB400; bottom stripes HB400; body HB400; sides HB400

CODE	Width [mm]	Capacity SAE [L]	Option	Dedicated to
WHD-W10-4500L-V	3400	4500	Z, S*	Volvo, parallel kinematics
WHD-W10-5000L-V	3400	5000	Z, S*	Volvo, parallel kinematics
WHD-W10-4500L-C	3560	4500	Z, S*	Cat, kinematics type Z
WHD-W10-5000L-C	3560	5000	Z, S*	Cat, kinematics type Z

*Z/S - teeth, segments



HIGH DUMP BUCKETS

Description: bucket with cylinders placed from outside; blade HB500; bottom stripes HB400; side bar HB400; direct fit on pins or a quick coupler; *spoil density max. 600kg/m³

CODE	Width [mm]	Capacity SAE [L]	Option	Type
WHT-W10-7000L	3400	7000	LW*	Standard bucket
WHT-W10-11000L	3700	11000	LW*	Light material bucket*
WHT-W10-13000L	4000	13000	LW*	Light material bucket*

*LW - optional interchangeable blade



LOADER QUICK COUPLERS

Description: quick coupler to meet the standards from Volvo, Komatsu, CAT, JCB, Liebherr and others; hydraulic locking system

CODE	Quick coupler type	Version
WQC-W10-BBM	TYPE VOLVO BBM	Hydraulic

