

dekpol[®]

STEEL

Dekpol Steel in numbers

Dekpol Steel is a leader on Polish market and one of the biggest companies in Europe specializing in production of buckets and attachments for construction machinery.

The company currently produces about 750 tons of finished products per month. 95% of the production is exported to more than 20 countries all over the world, some examples include Norway, Sweden, Germany, United Kingdom and even Korea or Australia. Dekpol Steel cooperates with the world's largest manufacturers of construction machinery. Thanks to many years of experience, the company is able to produce any kind of bucket and to adjust to any requirements our customers may have. The offer includes but is not limited to buckets such as excavator, skeleton, trapezoidal, loader, ditch cleaning bucket rigid or tilted hydraulic. They are used in quarries, gravel pits, earthworks or agriculture and others.

The company has a prestigious certificate of SSAB „Hardox in My Body”. Initially, the steel segment was developed within Dekpol S.A. where in 2012 the production of attachments for construction machinery started. The operations in this area were dynamically developed. At the beginning of 2020 this activity was separated into Dekpol Steel Sp. z o.o. The company plans a dynamic growth by increase in brand recognition, widening the commercial offer, territorial expansion and strengthening the position on already serviced markets.

11 700 m²

our total production halls area



750 tones

finished products – our monthly processing capacity



24 countries

we cooperate with, including Sweden, Norway, Germany, Morocco, USA or Australia



Table of content

MINI-MIDI EXCAVATORS

6

| | |
|-------------------------------------|----|
| GROUP D0 operating weight 1-1,8T | 8 |
| GROUP D1 operating weight 1,8T-2,6T | 10 |
| GROUP D2 operating weight 2,6-3,5T | 12 |
| GROUP D3 operating weight 3,5-5T | 14 |
| GROUP D4 operating weight 5-6T | 16 |
| GROUP D5 operating weight 5,5-8,5T | 18 |
| GROUP D6 operating weight 8-10T | 20 |
| GROUP D7 operating weight 10-12T | 22 |

BACKHOE LOADER

24

| | |
|---------------------------------|----|
| GROUP KŁ operating weight 7-11T | 26 |
|---------------------------------|----|

EXCAVATORS

28

| | |
|------------------------------------|----|
| GROUP D8 operating weight 12-13,5T | 30 |
| GROUP D9 operating weight 13-18,5T | 32 |
| GROUP D10 operating weight 19-24T | 34 |
| GROUP D11 operating weight 25-29T | 36 |
| GROUP D12 operating weight 29-33T | 38 |
| GROUP D13 operating weight 33-42T | 40 |
| GROUP D14 operating weight 43-55T | 42 |

WHEEL LOADERS

44

| | |
|------------------------------------|----|
| GROUP W2 operating weight 4-5,5T | 46 |
| GROUP W3 operating weight 5,5-6,5T | 48 |
| GROUP W4 operating weight 7-10T | 50 |
| GROUP W5 operating weight 11-15,5T | 52 |
| GROUP W6 operating weight 15,5-17T | 54 |
| GROUP W7 operating weight 18-22T | 56 |
| GROUP W8 operating weight 22-25T | 58 |
| GROUP W9 operating weight 25-29T | 60 |
| GROUP W10 operating weight 30-40T | 62 |

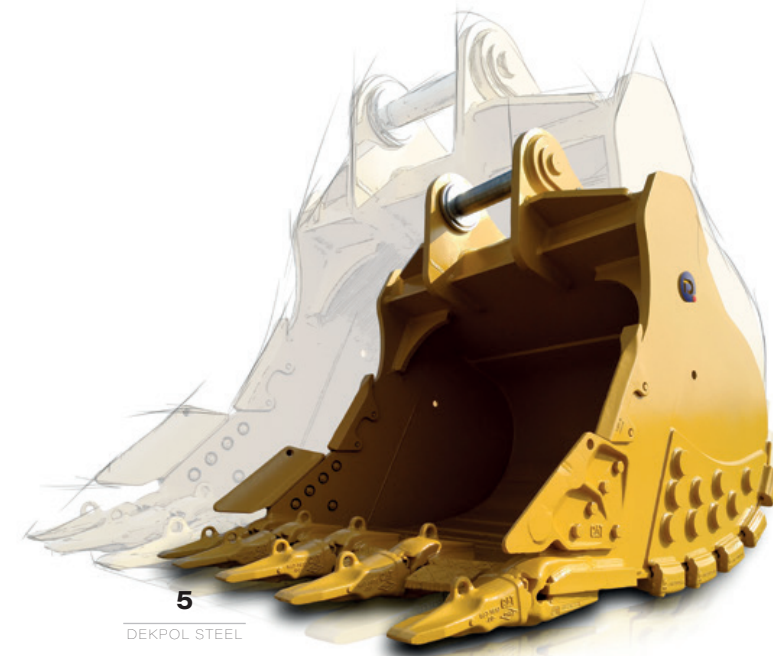
ADDITIONAL ATTACHMENTS

64

| | |
|------------------------------|--|
| Trans-shipment and unloading | |
| Demolishing and recycling | |

GENERAL TERMS OF SALE

66



MINI-MIDI EXCAVATORS



EXCAVATORS MINI-MIDI

Group
D0

Operating weight
1 - 1,8T

EXCAVATING BUCKETS

Description: standard bucket with screwed teeth, direct fit on pins or a quick coupler, blade HB500, cutting edges HB400

| CODE | Width [mm] | Capacity SAE [L] | Teeth quantity |
|-------------|------------|------------------|----------------|
| DG-D0-250mm | 250 | 22 | 2 |
| DG-D0-300mm | 300 | 27 | 3 |
| DG-D0-400mm | 400 | 39 | 3 |
| DG-D0-500mm | 500 | 50 | 4 |
| DG-D0-600mm | 600 | 62 | 4 |



SKELETON BUCKETS

Description: skeleton bucket with screwed teeth, direct fit on pins or a quick coupler, blade HB500, cutting edges HB400

| CODE | Width [mm] | Capacity SAE [L] | Teeth quantity |
|-------------|------------|------------------|----------------|
| DS-D0-250mm | 250 | 22 | 2 |
| DS-D0-300mm | 300 | 27 | 3 |
| DS-D0-400mm | 400 | 39 | 3 |
| DS-D0-500mm | 500 | 50 | 4 |
| DS-D0-600mm | 600 | 62 | 4 |



RIGID DITCH CLEANING BUCKETS

Description: ditch cleaning bucket with blade, direct fit on pins or a quick coupler, blade HB500, cutting edges HB400

| CODE | Width [mm] | Capacity SAE [L] |
|---------------|------------|------------------|
| DCR-D0-850mm | 850 | 70 |
| DCR-D0-900mm | 1000 | 82 |
| DCR-D0-1000mm | 1200 | 100 |



8

DEKPOL STEEL

EXCAVATORS MINI-MIDI

Group
D0

Operating weight
1 - 1,8T

QUICK COUPLERS

Description: mechanical quick coupler and hydraulic one Type Miller, Lehnhoff, Verachtert, OilQuick

| CODE | Type | Model |
|------------|------------|------------|
| EQC-D0-LEH | Lehnhoff | MS01; MS03 |
| EQC-D0-CW | Verachtert | CW05 |
| EQC-D0-MI | Miller | - |
| EQC-D0-OQ | OQ/Volvo | OQ40/24 |



RIPPERS

Description: CAT J tooth system, direct fit on pins or a quick coupler

| CODE | Shank thickness [mm] |
|------|----------------------|
| R-D0 | 30 |



ADAPTER PLATES

Description: adapter plates direct fit on pins or a quick coupler

| CODE | Type |
|-----------|----------------------|
| EAP-D0-R | Brackets for coupler |
| EAP-D0-M | Hammer fit |
| EAP-D0-CH | Grapple fit |
| EAP-D0-P | Connector |



9

DEKPOL STEEL

EXCAVATORS MINI-MIDI

Group
D1

Operating weight
1,8 - 2,6T

EXCAVATING BUCKETS

Description: standard bucket with screwed teeth, direct fit on pins or a quick coupler, blade HB500, cutting edges HB400

| CODE | Width [mm] | Capacity SAE [L] | Teeth quantity |
|-------------|------------|------------------|----------------|
| DG-D1-300mm | 300 | 42 | 3 |
| DG-D1-400mm | 400 | 60 | 3 |
| DG-D1-500mm | 500 | 78 | 4 |
| DG-D1-600mm | 600 | 97 | 4 |
| DG-D1-700mm | 700 | 115 | 5 |



SKELETON BUCKETS

Description: skeleton bucket with screwed teeth, direct fit on pins or a quick coupler, blade HB500, cutting edges HB400

| CODE | Width [mm] | Capacity SAE [L] | Teeth quantity |
|-------------|------------|------------------|----------------|
| DS-D1-300mm | 300 | 42 | 3 |
| DS-D1-400mm | 400 | 60 | 3 |
| DS-D1-500mm | 500 | 78 | 4 |
| DS-D1-600mm | 600 | 97 | 4 |
| DS-D1-700mm | 700 | 115 | 5 |



RIGID DITCH CLEANING BUCKETS

Description: ditch cleaning bucket with blade, direct fit on pins or a quick coupler, blade HB500, cutting edges HB400

| CODE | Width [mm] | Capacity SAE [L] |
|---------------|------------|------------------|
| DCR-D1-850mm | 850 | 70 |
| DCR-D1-1000mm | 1000 | 82 |
| DCR-D1-1200mm | 1200 | 100 |



10

DEKPOL STEEL

EXCAVATORS MINI-MIDI

Group
D1

Operating weight
1,8 - 2,6T

HYDRAULIC DITCH CLEANING BUCKETS

Description: hydraulic ditch cleaning bucket with blade, direct fit on pins or a quick coupler; blade HB500, cutting edges HB400, 1 x cylinder 2x40°

| CODE | Width [mm] | Capacity SAE [L] |
|---------------|------------|------------------|
| DCH-D1-850mm | 850 | 70 |
| DCH-D1-1000mm | 1000 | 82 |
| DCH-D1-1200mm | 1200 | 100 |



QUICK COUPLERS

Description: mechanical quick coupler and hydraulic one Type Miller, Lehnhoff, Verachtert, OilQuick

| CODE | Type | Model |
|------------|------------|------------|
| EQC-D1-LEH | Lehnhoff | MS01; MS03 |
| EQC-D1-CW | Verachtert | CW05 |
| EQC-D1-MI | Miller | - |
| EQC-D1-OQ | OQ/Volvo | OQ40/24 |



RIPPERS

Description: CAT J tooth system, direct fit on pins or a quick coupler

| CODE | Shank thickness [mm] |
|------|----------------------|
| R-D1 | 35 |



ADAPTER PLATES

Description: adapter plates direct fit on pins or a quick coupler

| CODE | Type |
|-----------|----------------------|
| EAP-D1-R | Brackets for coupler |
| EAP-D1-M | Hammer fit |
| EAP-D1-CH | Grapple fit |
| EAP-D1-P | Connector |



11

DEKPOL STEEL

EXCAVATORS MINI-MIDI

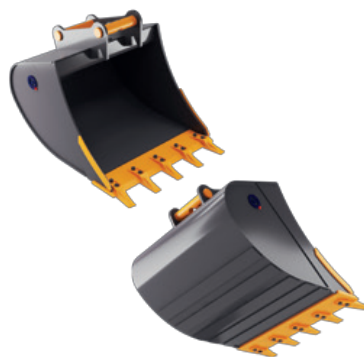
Group
D2

Operating weight
2,6 - 3,5T

EXCAVATING BUCKETS

Description: standard bucket with screwed teeth, direct fit on pins or a quick coupler; bottom stripes reinforcing the body, blade HB500, cutting edges HB400

| CODE | Width [mm] | Capacity SAE [L] | Teeth quantity |
|-------------|------------|------------------|----------------|
| DG-D2-300mm | 300 | 52 | 3 |
| DG-D2-400mm | 400 | 76 | 3 |
| DG-D2-500mm | 500 | 100 | 4 |
| DG-D2-600mm | 600 | 127 | 4 |
| DG-D2-700mm | 700 | 151 | 5 |
| DG-D2-800mm | 800 | 177 | 5 |



SKELETON BUCKETS

Description: skeleton bucket with screwed teeth, direct fit on pins or a quick coupler, blade HB500, cutting edges HB400

| CODE | Width [mm] | Capacity SAE [L] | Teeth quantity |
|-------------|------------|------------------|----------------|
| DS-D2-300mm | 300 | 52 | 3 |
| DS-D2-400mm | 400 | 76 | 3 |
| DS-D2-500mm | 500 | 100 | 4 |
| DS-D2-600mm | 600 | 127 | 4 |
| DS-D2-700mm | 700 | 151 | 5 |
| DS-D2-800mm | 800 | 177 | 5 |



RIGID DITCH CLEANING BUCKETS

Description: ditch cleaning bucket with blade, direct fit on pins or a quick coupler, blade HB500, cutting edges HB400

| CODE | Width [mm] | Capacity SAE [L] |
|---------------|------------|------------------|
| DCR-D2-1000mm | 1000 | 128 |
| DCR-D2-1200mm | 1200 | 156 |
| DCR-D2-1400mm | 1400 | 185 |
| DCR-D2-1500mm | 1500 | 200 |
| DCR-D2-1600mm | 1600 | 213 |



12

DEKPOL STEEL

EXCAVATORS MINI-MIDI

Group
D2

Operating weight
2,6 - 3,5T

HYDRAULIC DITCH CLEANING BUCKETS

Description: hydraulic ditch cleaning bucket with blade, direct fit on pins or a quick coupler; blade HB500, cutting edges HB400, 1 x cylinder 2x40°

| CODE | Width [mm] | Capacity SAE [L] |
|---------------|------------|------------------|
| DCH-D2-1000mm | 1000 | 128 |
| DCH-D2-1200mm | 1200 | 156 |
| DCH-D2-1400mm | 1400 | 185 |
| DCH-D2-1500mm | 1500 | 200 |
| DCH-D2-1600mm | 1600 | 213 |



QUICK COUPLERS

Description: mechanical quick coupler and hydraulic one Type Miller, Lehnhoff, Verachtert, OilQuick

| CODE | Type | Model |
|------------|------------|------------|
| EQC-D2-LEH | Lehnhoff | MS01; MS03 |
| EQC-D2-CW | Verachtert | CW05 |
| EQC-D2-MI | Miller | - |
| EQC-D2-OQ | OQ/Volvo | OQ40/24 |



RIPPERS

Description: CAT J tooth system, direct fit on pins or a quick coupler

| CODE | Shank thickness [mm] |
|------|----------------------|
| R-D2 | 40 |



ADAPTER PLATES

Description: adapter plates direct fit on pins or a quick coupler

| CODE | Type |
|-----------|----------------------|
| EAP-D2-R | Brackets for coupler |
| EAP-D2-M | Hammer fit |
| EAP-D2-CH | Grapple fit |
| EAP-D2-P | Connectors |



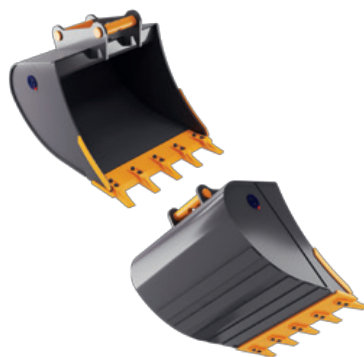
13

DEKPOL STEEL

EXCAVATING BUCKETS

Description: standard bucket with screwed teeth, direct fit on pins or a quick coupler; bottom stripes reinforcing the body, blade HB500, cutting edges HB400

| CODE | Width [mm] | Capacity SAE [L] | Teeth quantity |
|-------------|------------|------------------|----------------|
| DG-D3-300mm | 300 | 67 | 3 |
| DG-D3-400mm | 400 | 97 | 3 |
| DG-D3-500mm | 500 | 129 | 4 |
| DG-D3-600mm | 600 | 161 | 4 |
| DG-D3-700mm | 700 | 194 | 5 |
| DG-D3-800mm | 800 | 230 | 5 |



SKELETON BUCKETS

Description: skeleton bucket with screwed teeth, direct fit on pins or a quick coupler, blade HB500, cutting edges HB400

| CODE | Width [mm] | Capacity SAE [L] | Teeth quantity |
|-------------|------------|------------------|----------------|
| DS-D3-300mm | 300 | 67 | 3 |
| DS-D3-400mm | 400 | 97 | 3 |
| DS-D3-500mm | 500 | 129 | 4 |
| DS-D3-600mm | 600 | 161 | 4 |
| DS-D3-700mm | 700 | 194 | 5 |
| DS-D3-800mm | 800 | 230 | 5 |



RIGID DITCH CLEANING BUCKETS

Description: ditch cleaning bucket with blade, direct fit on pins or a quick coupler, blade HB500, cutting edges HB400

| CODE | Width [mm] | Capacity SAE [L] |
|---------------|------------|------------------|
| DCR-D3-1000mm | 1000 | 142 |
| DCR-D3-1200mm | 1200 | 175 |
| DCR-D3-1400mm | 1400 | 207 |
| DCR-D3-1500mm | 1500 | 223 |
| DCR-D3-1600mm | 1600 | 240 |



HYDRAULIC DITCH CLEANING BUCKETS

Description: hydraulic ditch cleaning bucket with blade, direct fit on pins or a quick coupler; blade HB500, cutting edges HB400, 1 x cylinder 2x45°

| CODE | Width [mm] | Capacity SAE [L] |
|---------------|------------|------------------|
| DCH-D3-1000mm | 1000 | 142 |
| DCH-D3-1200mm | 1200 | 175 |
| DCH-D3-1400mm | 1400 | 207 |
| DCH-D3-1500mm | 1500 | 223 |
| DCH-D3-1600mm | 1600 | 240 |



QUICK COUPLERS

Description: mechanical quick coupler and hydraulic one Type Miller, Lehnhoff, Verachtert, OilQuick

| CODE | Type | Model |
|------------|------------|------------|
| EQC-D3-LEH | Lehnhoff | MS01; MS03 |
| EQC-D3-CW | Verachtert | CW10 |
| EQC-D3-MI | Miller | - |
| EQC-D3-OQ | OQ/Volvo | OQ40/24 |



RIPPERS

Description: CAT J tooth system, direct fit on pins or a quick coupler

| CODE | Shank thickness [mm] |
|------|----------------------|
| R-D3 | 40 |



ADAPTER PLATES

Description: adapter plates direct fit on pins or a quick coupler

| CODE | Type |
|-----------|----------------------|
| EAP-D3-R | Brackets for coupler |
| EAP-D3-M | Hammer fit |
| EAP-D3-CH | Grapple fit |
| EAP-D3-P | Connectors |



EXCAVATORS MINI-MIDI

Group
D4

Operating weight
5 - 6T

EXCAVATING BUCKETS

Description: standard bucket with screwed teeth, direct fit on pins or a quick coupler; bottom stripes reinforcing the body, blade HB500, cutting edges HB400

| CODE | Width [mm] | Capacity SAE [L] | Teeth quantity |
|--------------|------------|------------------|----------------|
| DG-D4-300mm | 300 | 74 | 3 |
| DG-D4-400mm | 400 | 107 | 3 |
| DG-D4-500mm | 500 | 141 | 4 |
| DG-D4-600mm | 600 | 177 | 4 |
| DG-D4-800mm | 800 | 250 | 5 |
| DG-D4-1000mm | 1000 | 323 | 5 |



SKELETON BUCKETS

Description: skeleton bucket with screwed teeth, direct fit on pins or a quick coupler, blade HB500, cutting edges HB400

| CODE | Width [mm] | Capacity SAE [L] | Teeth quantity |
|--------------|------------|------------------|----------------|
| DS-D4-300mm | 300 | 74 | 3 |
| DS-D4-400mm | 400 | 107 | 3 |
| DS-D4-500mm | 500 | 141 | 4 |
| DS-D4-600mm | 600 | 177 | 4 |
| DS-D4-800mm | 800 | 250 | 5 |
| DS-D4-1000mm | 1000 | 323 | 5 |



RIGID DITCH CLEANING BUCKETS

Description: ditch cleaning bucket with blade, direct fit on pins or a quick coupler, blade HB500, cutting edges HB400

| CODE | Width [mm] | Capacity SAE [L] |
|---------------|------------|------------------|
| DCR-D4-1000mm | 1000 | 156 |
| DCR-D4-1200mm | 1200 | 192 |
| DCR-D4-1400mm | 1400 | 227 |
| DCR-D4-1500mm | 1500 | 245 |
| DCR-D4-1600mm | 1600 | 263 |



16

DEKPOL STEEL

EXCAVATORS MINI-MIDI

Group
D4

Operating weight
5 - 6T

HYDRAULIC DITCH CLEANING BUCKETS

Description: hydraulic ditch cleaning bucket with blade, direct fit on pins or a quick coupler; blade HB500, cutting edges HB400, 1 x cylinder 2x45°

| CODE | Width [mm] | Capacity SAE [L] |
|---------------|------------|------------------|
| DCH-D4-1000mm | 1000 | 156 |
| DCH-D4-1200mm | 1200 | 192 |
| DCH-D4-1400mm | 1400 | 227 |
| DCH-D4-1500mm | 1500 | 245 |
| DCH-D4-1600mm | 1600 | 263 |



QUICK COUPLERS

Description: mechanical quick coupler and hydraulic one Type Miller, Lehnhoff, Verachtert, OilQuick

| CODE | Type | Model |
|------------|------------|------------|
| EQC-D4-LEH | Lehnhoff | MS01; MS03 |
| EQC-D4-CW | Verachtert | CW10 |
| EQC-D4-MI | Miller | - |
| EQC-D4-OQ | OQ/Volvo | OQ45-5 |



RIPPERS

Description: CAT J tooth system, direct fit on pins or a quick coupler

| CODE | Shank thickness [mm] |
|------|----------------------|
| R-D4 | 40 |



ADAPTER PLATES

Description: adapter plates direct fit on pins or a quick coupler

| CODE | Type |
|-----------|----------------------|
| EAP-D4-R | Brackets for coupler |
| EAP-D4-M | Hammer fit |
| EAP-D4-CH | Grapple fit |
| EAP-D4-P | Connectors |



17

DEKPOL STEEL

EXCAVATORS MINI-MIDI

Group
D5

Operating weight
5,5 - 8,5T

EXCAVATING BUCKETS

Description: standard bucket with screwed teeth, direct fit on pins or a quick coupler; bottom stripes reinforcing the body, blade HB500, cutting edges HB400

| CODE | Width [mm] | Capacity SAE [L] | Teeth quantity |
|--------------|------------|------------------|----------------|
| DG-D5-300mm | 300 | 90 | 3 |
| DG-D5-400mm | 400 | 130 | 3 |
| DG-D5-500mm | 500 | 170 | 4 |
| DG-D5-600mm | 600 | 210 | 4 |
| DG-D5-800mm | 800 | 300 | 5 |
| DG-D5-900mm | 900 | 340 | 5 |
| DG-D5-1000mm | 1000 | 380 | 5 |



SKELETON BUCKETS

Description: skeleton bucket with screwed teeth, direct fit on pins or a quick coupler, blade HB500, cutting edges HB400

| CODE | Width [mm] | Capacity SAE [L] | Teeth quantity |
|--------------|------------|------------------|----------------|
| DS-D5-300mm | 300 | 90 | 3 |
| DS-D5-400mm | 400 | 130 | 3 |
| DS-D5-500mm | 500 | 170 | 4 |
| DS-D5-600mm | 600 | 210 | 4 |
| DS-D5-800mm | 800 | 300 | 5 |
| DS-D5-900mm | 900 | 340 | 5 |
| DS-D5-1000mm | 1000 | 380 | 5 |



RIGID DITCH CLEANING BUCKETS

Description: ditch cleaning bucket with blade, direct fit on pins or a quick coupler, bottom stripes reinforcing the body, blade HB500, cutting edges HB400

| CODE | Width [mm] | Capacity SAE [L] |
|---------------|------------|------------------|
| DCR-D5-1400mm | 1400 | 279 |
| DCR-D5-1500mm | 1500 | 301 |
| DCR-D5-1600mm | 1600 | 323 |
| DCR-D5-1800mm | 1800 | 367 |



18

DEKPOL STEEL

EXCAVATORS MINI-MIDI

Group
D5

Operating weight
5,5 - 8,5T

HYDRAULIC DITCH CLEANING BUCKETS

Description: hydraulic ditch cleaning bucket with blade, direct fit on pins or a quick coupler; bottom stripes reinforcing the body, blade HB500, cutting edges HB400, 1 x cylinder 2x45°

| CODE | Width [mm] | Capacity SAE [L] |
|---------------|------------|------------------|
| DCH-D5-1400mm | 1400 | 279 |
| DCH-D5-1500mm | 1500 | 301 |
| DCH-D5-1600mm | 1600 | 323 |
| DCH-D5-1800mm | 1800 | 367 |



QUICK COUPLERS

Description: mechanical quick coupler and hydraulic one Type Miller, Lehnhoff, Verachttert, OilQuick

| CODE | Type | Model |
|------------|-------------|-------------------|
| EQC-D5-LEH | Lehnhoff | MS08 |
| EQC-D5-CW | Verachttert | CW10; CW20; CW20S |
| EQC-D5-MI | Miller | - |
| EQC-D5-OQ | OQ/Volvo | OQ45-5 |



RIPPERS

Description: CAT J tooth system, direct fit on pins or a quick coupler

| CODE | Shank thickness [mm] |
|------|----------------------|
| R-D5 | 40 |



ADAPTER PLATES

Description: adapter plates direct fit on pins or a quick coupler

| CODE | Type |
|-----------|----------------------|
| EAP-D5-R | Brackets for coupler |
| EAP-D5-M | Hammer fit |
| EAP-D5-CH | Grapple fit |
| EAP-D5-P | Connectors |



19

DEKPOL STEEL

EXCAVATING BUCKETS

Description: standard bucket with screwed teeth, direct fit on pins or a quick coupler; bottom stripes reinforcing the body, blade HB500, cutting edges HB400

| CODE | Width [mm] | Capacity SAE [L] | Teeth quantity |
|--------------|------------|------------------|----------------|
| DG-D6-300mm | 300 | 105 | 3 |
| DG-D6-400mm | 400 | 155 | 3 |
| DG-D6-500mm | 500 | 200 | 4 |
| DG-D6-600mm | 600 | 255 | 4 |
| DG-D6-800mm | 800 | 370 | 5 |
| DG-D6-900mm | 900 | 425 | 5 |
| DG-D6-1000mm | 1000 | 480 | 5 |



SKELETON BUCKETS

Description: skeleton bucket with screwed teeth, direct fit on pins or a quick coupler, blade HB500, cutting edges HB400

| CODE | Width [mm] | Capacity SAE [L] | Teeth quantity |
|--------------|------------|------------------|----------------|
| DS-D6-300mm | 300 | 105 | 3 |
| DS-D6-400mm | 400 | 155 | 3 |
| DS-D6-500mm | 500 | 200 | 4 |
| DS-D6-600mm | 600 | 255 | 4 |
| DS-D6-800mm | 800 | 370 | 5 |
| DS-D6-900mm | 900 | 425 | 5 |
| DS-D6-1000mm | 1000 | 480 | 5 |



RIGID DITCH CLEANING BUCKETS

Description: ditch cleaning bucket with blade, direct fit on pins or a quick coupler, bottom stripes reinforcing the body, blade HB500, cutting edges HB400

| CODE | Width [mm] | Capacity SAE [L] |
|---------------|------------|------------------|
| DCR-D6-1500mm | 1500 | 345 |
| DCR-D6-1600mm | 1600 | 370 |
| DCR-D6-1800mm | 1800 | 420 |



HYDRAULIC DITCH CLEANING BUCKETS

Description: hydraulic ditch cleaning bucket with blade, direct fit on pins or a quick coupler; bottom stripes reinforcing the body, blade HB500, cutting edges HB400, 1 x cylinder 2x45°

| CODE | Width [mm] | Capacity SAE [L] |
|---------------|------------|------------------|
| DCH-D6-1500mm | 1500 | 345 |
| DCH-D6-1600mm | 1600 | 370 |
| DCH-D6-1800mm | 1800 | 420 |



QUICK COUPLERS

Description: mechanical quick coupler and hydraulic one Type Miller, Lehnhoff, Verachttert, OilQuick

| CODE | Type | Model |
|------------|-------------|-------------------|
| EQC-D6-LEH | Lehnhoff | MS08 |
| EQC-D6-CW | Verachttert | CW10; CW20; CW20S |
| EQC-D6-MI | Miller | - |
| EQC-D6-OQ | OQ/Volvo | OQ45-5; OQ60-5 |



RIPPERS

Description: CAT J tooth system, direct fit on pins or a quick coupler

| CODE | Shank thickness [mm] |
|------|----------------------|
| R-D6 | 50 |



ADAPTER PLATES

Description: adapter plates direct fit on pins or a quick coupler

| CODE | Type |
|-----------|----------------------|
| EAP-D6-R | Brackets for coupler |
| EAP-D6-M | Hammer fit |
| EAP-D6-CH | Grapple fit |
| EAP-D6-P | Connectors |



EXCAVATING BUCKETS

Description: standard bucket with screwed teeth, direct fit on pins or a quick coupler; bottom stripes reinforcing the body, blade HB500, cutting edges HB400

| CODE | Width [mm] | Capacity SAE [L] | Teeth quantity |
|--------------|------------|------------------|----------------|
| DG-D7-500mm | 500 | 197 | 3 |
| DG-D7-600mm | 600 | 252 | 3 |
| DG-D7-700mm | 700 | 309 | 3 |
| DG-D7-800mm | 800 | 367 | 4 |
| DG-D7-900mm | 900 | 425 | 4 |
| DG-D7-1000mm | 1000 | 484 | 4 |
| DG-D7-1100mm | 1100 | 543 | 5 |
| DG-D7-1200mm | 1200 | 602 | 5 |



SKELETON BUCKETS

Description: skeleton bucket with screwed teeth, direct fit on pins or a quick coupler, blade HB500, cutting edges HB400

| CODE | Width [mm] | Capacity SAE [L] | Teeth quantity |
|--------------|------------|------------------|----------------|
| DS-D7-500mm | 500 | 197 | 3 |
| DS-D7-600mm | 600 | 252 | 3 |
| DS-D7-700mm | 700 | 309 | 3 |
| DS-D7-800mm | 800 | 367 | 4 |
| DS-D7-900mm | 900 | 425 | 4 |
| DS-D7-1000mm | 1000 | 484 | 4 |
| DS-D7-1100mm | 1100 | 543 | 5 |
| DS-D7-1200mm | 1200 | 602 | 5 |



RIGID DITCH CLEANING BUCKETS

Description: ditch cleaning bucket with blade, direct fit on pins or a quick coupler, blade HB500, cutting edges HB400

| CODE | Width [mm] | Width SAE [L] |
|---------------|------------|---------------|
| DCR-D7-1800mm | 1800 | 460 |
| DCR-D7-2000mm | 2000 | 520 |



HYDRAULIC DITCH CLEANING BUCKETS

Description: hydraulic ditch cleaning bucket with blade, direct fit on pins or a quick coupler; blade HB500, cutting edges HB400, 1 x cylinder 2x45°

| CODE | Width [mm] | Capacity SAE [L] | Option |
|---------------|------------|------------------|--------|
| DCH-D7-1800mm | 1800 | 460 | LT* |
| DCH-D7-2000mm | 2000 | 520 | LT* |

*LT -Optional rear blade



QUICK COUPLERS

Description: mechanical quick coupler and hydraulic one Type Miller, Lehnhoff, Verachtert, OilQuick

| CODE | Type | Model |
|------------|------------|----------------|
| EQC-D7-LEH | Lehnhoff | MS08 |
| EQC-D7-CW | Verachtert | CW20; CW20S |
| EQC-D7-MI | Miller | - |
| EQC-D7-OQ | OQ/Volvo | OQ45-5; OQ60-5 |



RIPPERS

Description: CAT J tooth system, direct fit on pins or a quick coupler

| CODE | Shank thickness [mm] |
|------|----------------------|
| R-D7 | 50 |



ADAPTER PLATES

Description: adapter plates direct fit on pins or a quick coupler

| CODE | Type |
|-----------|----------------------|
| EAP-D7-R | Brackets for coupler |
| EAP-D7-M | Hammer fit |
| EAP-D7-CH | Grapple fit |
| EAP-D7-P | Connectors |



BACKHOE LOADER



BACKHOE LOADER

Group
KŁ

Operating weight
7 - 11T

EXCAVATING BUCKETS

Description: standard bucket with screwed teeth, direct fit on pins, bottom stripe reinforcing the body, blade HB500

| CODE | Width [mm] | Capacity SAE [L] | Teeth quantity |
|-------------|------------|------------------|----------------|
| DG-KŁ-300mm | 300 | 90 | 3 |
| DG-KŁ-350mm | 350 | 105 | 3 |
| DG-KŁ-400mm | 400 | 125 | 3 |
| DG-KŁ-450mm | 450 | 150 | 4 |
| DG-KŁ-500mm | 500 | 165 | 4 |
| DG-KŁ-550mm | 550 | 185 | 4 |
| DG-KŁ-600mm | 600 | 210 | 4 |
| DG-KŁ-650mm | 650 | 230 | 4 |
| DG-KŁ-700mm | 700 | 250 | 5 |
| DG-KŁ-750mm | 750 | 265 | 5 |
| DG-KŁ-800mm | 800 | 285 | 5 |
| DG-KŁ-850mm | 850 | 310 | 5 |
| DG-KŁ-900mm | 900 | 330 | 5 |



RIGID DITCH CLEANING BUCKETS

Description: ditch cleaning bucket with blade, direct fit on pins, bottom stripes reinforcing the body, blade HB500, cutting edges HB400

| CODE | Width [mm] | Capacity SAE [L] |
|---------------|------------|------------------|
| DCR-KŁ-1500mm | 1500 | 300 |
| DCR-KŁ-1600mm | 1600 | 320 |
| DCR-KŁ-1800mm | 1800 | 360 |



HYDRAULIC DITCH CLEANING BUCKETS

Description: hydraulic ditch cleaning bucket with blade, direct fit on pins, bottom stripes reinforcing the body, blade HB500, cutting edges HB400, 2 x cylinders 2x45°

| CODE | Width [mm] | Capacity SAE [L] |
|---------------|------------|------------------|
| DCH-KŁ-1500mm | 1500 | 300 |
| DCH-KŁ-1600mm | 1600 | 320 |
| DCH-KŁ-1800mm | 1800 | 360 |



26

DEKPOL STEEL

BACKHOE LOADER

Group
KŁ

Operating weight
7 - 11T

QUICK COUPLERS

Description: mechanical quick coupler and hydraulic one Type Miller, Lehnhoff, Verachtert

| CODE | Type | Model |
|-----------|--------|-------|
| EQC-KŁ-MI | Miller | - |



RIPPERS

Description: CAT J tooth system, direct fit on pins

| CODE | Shank thickness [mm] | Tooth |
|------|----------------------|-------|
| R-KŁ | 35 | J300 |



4IN1 BUCKETS

Description: CAT/BOFORS tooth system; direct fit on pins or a quick coupler, possible configuration with forks

| CODE | Width [mm] | Capacity SAE [L] |
|---------------|------------|------------------|
| W4/1-KŁ-1000L | 2400 | 1000 |
| W4/1-KŁ-1200L | 2450 | 1200 |
| W4/1-KŁ-1300L | 2500 | 1300 |



27

DEKPOL STEEL

EXCAVATORS

MEDIUM SIZE



EXCAVATING BUCKETS

Description: standard bucket with teeth, ESCO/ CAT J tooth system; direct fit on pins or a quick coupler, blade HB500, cutting edges LS, bottom stripes reinforcing the body

| CODE | Width [mm] | Capacity SAE [L] | Teeth quantity | Type |
|--------------|------------|------------------|----------------|------|
| DG-D8-400mm | 400 | 160 | 2 | GP |
| DG-D8-500mm | 500 | 230 | 3 | GP |
| DG-D8-600mm | 600 | 300 | 3 | GP |
| DG-D8-700mm | 700 | 380 | 3 | GP |
| DG-D8-800mm | 800 | 450 | 4 | GP |
| DG-D8-900mm | 900 | 530 | 4 | GP |
| DG-D8-1000mm | 1000 | 610 | 4 | GP |
| DG-D8-1100mm | 1100 | 680 | 5 | GP |
| DG-D8-1200mm | 1200 | 760 | 5 | GP |



SKELETON BUCKETS

Description: skeleton bucket with teeth, ESCO/ CAT J tooth system, direct fit on pins or a quick coupler, blade HB500, cutting edges LS

| CODE | Width [mm] | Capacity SAE [L] | Teeth quantity | Type |
|--------------|------------|------------------|----------------|------|
| DS-D8-400mm | 400 | 160 | 2 | GP |
| DS-D8-500mm | 500 | 230 | 3 | GP |
| DS-D8-600mm | 600 | 300 | 3 | GP |
| DS-D8-700mm | 700 | 380 | 3 | GP |
| DS-D8-800mm | 800 | 450 | 4 | GP |
| DS-D8-900mm | 900 | 530 | 4 | GP |
| DS-D8-1000mm | 1000 | 610 | 4 | GP |
| DS-D8-1100mm | 1100 | 680 | 5 | GP |
| DS-D8-1200mm | 1200 | 760 | 5 | GP |



RIGID DITCH CLEANING BUCKETS

Description: ditch cleaning bucket with interchangeable blade, direct fit on pins or a quick coupler, blade HB500, cutting edges HB400, bottom stripes reinforcing the body

| CODE | Width [mm] | Capacity SAE [L] | Option |
|---------------|------------|------------------|--------|
| DCR-D8-1800mm | 1800 | 460 | LT* |
| DCR-D8-2000mm | 2000 | 520 | LT* |

*LT -Optional rear blade



HYDRAULIC DITCH CLEANING BUCKETS

Description: hydraulic ditch cleaning bucket with interchangeable blade, direct fit on pins or a quick coupler; blade HB500, cutting edges HB400, 2 x cylinders 2x45°

| CODE | Width [mm] | Capacity SAE [L] | Option |
|---------------|------------|------------------|--------|
| DCH-D8-1800mm | 1800 | 460 | LT* |
| DCH-D8-2000mm | 2000 | 520 | LT* |

*LT -Optional rear blade



QUICK COUPLERS

Description: mechanical quick coupler and hydraulic one Type Miller, Lehnhoff, Verachtert, OilQuick

| CODE | Type | Model |
|------------|------------|-------------|
| EQC-D8-LEH | Lehnhoff | MS10 |
| EQC-D8-CW | Verachtert | CW20; CW20S |
| EQC-D8-MI | Miller | - |
| EQC-D8-OQ | OQ/Volvo | OQ60-5 |



RIPPERS

Description: CAT J tooth system, direct fit on pins or a quick coupler; shank reinforced with HB400 metal sheet

| CODE | Shank thickness [mm] |
|------|----------------------|
| R-D8 | 50 |



ADAPTER PLATES

Description: adapter plates direct fit on pins or a quick coupler

| CODE | Type |
|-----------|----------------------|
| EAP-D8-R | Brackets for coupler |
| EAP-D8-M | Hammer fit |
| EAP-D8-CH | Grapple fit |
| EAP-D8-P | Connectors |



EXCAVATING BUCKETS

Description: Description: standard bucket with teeth, ESCO/ CAT J tooth system; direct fit on pins or a quick coupler, blade HB500, cutting edges LS, bottom stripes reinforcing the body

| CODE | Width [mm] | Capacity SAE [L] | Teeth quantity | Type |
|--------------|------------|------------------|----------------|------|
| DG-D9-500mm | 500 | 300 | 3 | GP |
| DG-D9-600mm | 600 | 380 | 3 | GP |
| DG-D9-700mm | 700 | 470 | 3 | GP |
| DG-D9-800mm | 800 | 560 | 4 | GP |
| DG-D9-900mm | 900 | 650 | 4 | GP |
| DG-D9-1000mm | 1000 | 750 | 4 | GP |
| DG-D9-1100mm | 1100 | 840 | 5 | GP |
| DG-D9-1200mm | 1200 | 930 | 5 | GP |
| DG-D9-1300mm | 1300 | 1030 | 5 | GP |



SKELETON BUCKETS

Description: skeleton bucket with teeth, ESCO/ CAT J tooth system, direct fit on pins or a quick coupler, blade HB500, cutting edges LS

| CODE | Width [mm] | Capacity SAE [L] | Teeth quantity | Type |
|--------------|------------|------------------|----------------|------|
| DS-D9-500mm | 500 | 300 | 3 | GP |
| DS-D9-600mm | 600 | 380 | 3 | GP |
| DS-D9-700mm | 700 | 470 | 3 | GP |
| DS-D9-800mm | 800 | 560 | 4 | GP |
| DS-D9-900mm | 900 | 650 | 4 | GP |
| DS-D9-1000mm | 1000 | 750 | 4 | GP |
| DS-D9-1100mm | 1100 | 840 | 5 | GP |
| DS-D9-1200mm | 1200 | 930 | 5 | GP |
| DS-D9-1300mm | 1300 | 1030 | 5 | GP |



RIGID DITCH CLEANING BUCKETS

Description: ditch cleaning bucket with interchangeable blade, direct fit on pins or a quick coupler, blade HB500, cutting edges HB400, bottom stripes reinforcing the body

| CODE | Width [mm] | Capacity SAE [L] | Option |
|---------------|------------|------------------|--------|
| DCR-D9-1800mm | 1800 | 590 | LT* |
| DCR-D9-2000mm | 2000 | 660 | LT* |

*LT -Optional rear blade



HYDRAULIC DITCH CLEANING BUCKETS

Description: hydraulic ditch cleaning bucket with interchangeable blade, direct fit on pins or a quick coupler, blade HB500, cutting edges HB400, bottom stripes reinforcing the body, 2 x cylinders 2x45°

| CODE | Width [mm] | Capacity SAE [L] | Option |
|---------------|------------|------------------|--------|
| DCH-D9-1800mm | 1800 | 590 | LT* |
| DCH-D9-2000mm | 2000 | 660 | LT* |

*LT -Optional rear blade



QUICK COUPLERS

Description: mechanical quick coupler and hydraulic one Type Miller, Lehnhoff, Verachttert, OilQuick

| CODE | Type | Model |
|------------|-------------|--------------------------|
| EQC-D9-LEH | Lehnhoff | MS10; MS21-25 |
| EQC-D9-CW | Verachttert | CW20; CW20S; CW30; CW30S |
| EQC-D9-MI | Miller | - |
| EQC-D9-OQ | OQ/Volvo | OQ60-5; OQ65; OQ70 |



RIPPERS

Description: CAT J tooth system, direct fit on pins or a quick coupler; shank reinforced with HB400 metal sheet

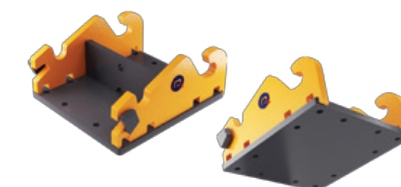
| CODE | Shank thickness [mm] |
|------|----------------------|
| R-D9 | 50 |



ADAPTER PLATES

Description: adapter plates direct fit on pins or a quick coupler

| CODE | Type |
|-----------|----------------------|
| EAP-D9-R | Brackets for coupler |
| EAP-D9-M | Hammer fit |
| EAP-D9-CH | Grapple fit |
| EAP-D9-P | Connectors |

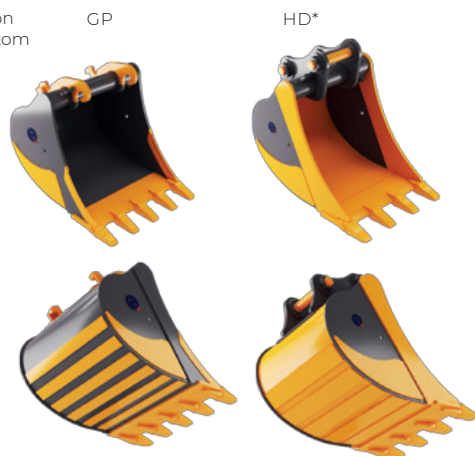


EXCAVATING BUCKETS

Description: standard bucket with teeth, ESCO/ CAT J tooth system; direct fit on pins or a quick coupler, blade HB500, cutting edges LS, side plate HB400, bottom stripes reinforcing the body HB400

| CODE | Width [mm] | Capacity SAE [L] | Teeth quantity | Type |
|---------------|------------|------------------|----------------|--------|
| DG-D10-600mm | 600 | 440 | 3 | GP |
| DG-D10-700mm | 700 | 540 | 3 | GP |
| DG-D10-800mm | 800 | 640 | 3 | GP |
| DG-D10-900mm | 900 | 750 | 4 | GP |
| DG-D10-1000mm | 1000 | 860 | 4 | GP |
| DG-D10-1100mm | 1100 | 970 | 4 | GP |
| DG-D10-1200mm | 1200 | 1080 | 5 | GP/HD* |
| DG-D10-1300mm | 1300 | 1200 | 5 | GP/HD* |
| DG-D10-1400mm | 1400 | 1310 | 5 | GP/HD* |

* HD version - body HB400, cutting edge HB400

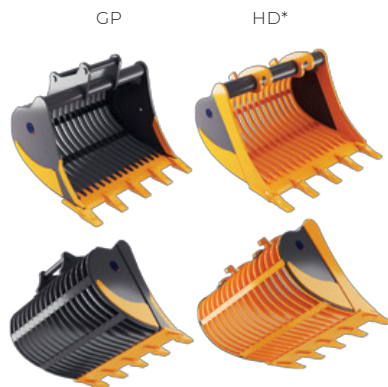


SKELETON BUCKETS

Description: skeleton bucket with teeth, ESCO/ CAT J tooth system; direct fit on pins or a quick coupler, blade HB500, cutting edges LS, side plate HB400

| CODE | Width [mm] | Capacity SAE [L] | Teeth quantity | Type |
|---------------|------------|------------------|----------------|--------|
| DS-D10-600mm | 600 | 440 | 3 | GP/HD* |
| DS-D10-700mm | 700 | 540 | 3 | GP/HD* |
| DS-D10-800mm | 800 | 640 | 3 | GP/HD* |
| DS-D10-900mm | 900 | 750 | 4 | GP/HD* |
| DS-D10-1000mm | 1000 | 860 | 4 | GP/HD* |
| DS-D10-1100mm | 1100 | 970 | 4 | GP/HD* |
| DS-D10-1200mm | 1200 | 1080 | 5 | GP/HD* |
| DS-D10-1300mm | 1300 | 1200 | 5 | GP/HD* |
| DS-D10-1400mm | 1400 | 1310 | 5 | GP/HD* |

* HD version - bars HB400, cutting edges HB400



RIGID DITCH CLEANING BUCKETS

Description: ditch cleaning bucket with interchangeable blade, direct fit on pins or a quick coupler, blade HB500, cutting edges HB400, bottom stripes reinforcing the body HB400

| CODE | Width [mm] | Capacity SAE [L] | Option |
|----------------|------------|------------------|--------|
| DCR-D10-2000mm | 2000 | 800 | LT* |
| DCR-D10-2200mm | 2200 | 920 | LT* |

*LT -Optional rear blade



HYDRAULIC DITCH CLEANING BUCKETS

Description: hydraulic ditch cleaning bucket with interchangeable blade, direct fit on pins or a quick coupler, blade HB500, cutting edges HB400, bottom stripes reinforcing the body HB400, 2 x cylinders 2x45°

| CODE | Width [mm] | Capacity SAE [L] | Option |
|----------------|------------|------------------|--------|
| DCH-D10-2000mm | 2000 | 800 | LT* |
| DCH-D10-2200mm | 2200 | 920 | LT* |

*LT -Optional rear blade



QUICK COUPLERS

Description: mechanical quick coupler and hydraulic one Type Miller, Lehnhoff, Verachtert, OilQuick

| CODE | Type | Model |
|-------------|------------|--------------------------|
| EQC-D10-LEH | Lehnhoff | MS10; MS21-25 |
| EQC-D10-CW | Verachtert | CW20; CW20S; CW30; CW30S |
| EQC-D10-MI | Miller | - |
| EQC-D10-OQ | OQ/Volvo | OQ60-5; OQ65; OQ70 |



RIPPERS

Description: CAT J tooth system, direct fit on pins or a quick coupler; shank reinforced with HB400 metal sheet

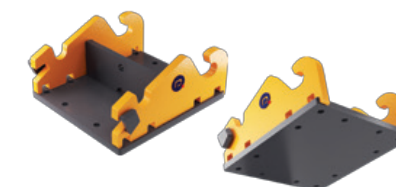
| CODE | Shank thickness [mm] |
|-------|----------------------|
| R-D10 | 60 |



ADAPTER PLATES

Description: adapter plates direct fit on pins or a quick coupler

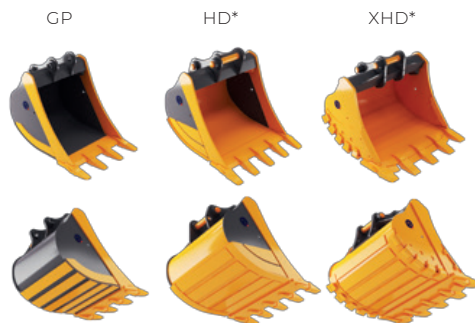
| CODE | Type |
|------------|----------------------|
| EAP-D10-R | Brackets for coupler |
| EAP-D10-M | Hammer fit |
| EAP-D10-CH | Grapple fit |
| EAP-D10-P | Connectors |



EXCAVATING BUCKETS

Description: standard bucket with teeth, ESCO/ CAT J tooth system, direct fit on pins or a quick coupler, blade HB500, cutting edges HB400, side plate HB400, bottom stripes reinforcing the body HB400

| CODE | Width [mm] | Capacity SAE [L] | Teeth quantity | Type |
|---------------|------------|------------------|----------------|-------------|
| DG-D11-600mm | 600 | 450 | 3 | GP |
| DG-D11-700mm | 700 | 580 | 3 | GP |
| DG-D11-800mm | 800 | 700 | 3 | GP |
| DG-D11-1000mm | 1000 | 950 | 4 | GP |
| DG-D11-1200mm | 1200 | 1200 | 4 | GP/HD*/XHD* |
| DG-D11-1300mm | 1300 | 1330 | 5 | GP/HD*/XHD* |
| DG-D11-1400mm | 1400 | 1450 | 5 | GP/HD*/XHD* |
| DG-D11-1500mm | 1500 | 1580 | 5 | GP/HD*/XHD* |



*HD version - body HB400
*XHD version - internal stripes HB400; straight or trapezoidal blade, protection of cutting sides, side heel shrouds, body HB400, side plates HB400, lip segments protection

SKELETON BUCKETS

Description: skeleton bucket with teeth, ESCO/ CAT J tooth system; direct fit on pins or a quick coupler, blade HB500, cutting edges HB400, side plate HB400, bars HB400

| CODE | Width [mm] | Capacity SAE [L] | Teeth quantity | Type |
|---------------|------------|------------------|----------------|------|
| DS-D11-600mm | 600 | 450 | 3 | GP |
| DS-D11-700mm | 700 | 580 | 3 | GP |
| DS-D11-800mm | 800 | 700 | 3 | GP |
| DS-D11-1000mm | 1000 | 950 | 4 | GP |
| DS-D11-1200mm | 1200 | 1200 | 4 | GP |
| DS-D11-1300mm | 1300 | 1330 | 5 | GP |
| DS-D11-1400mm | 1400 | 1450 | 5 | GP |
| DS-D11-1500mm | 1500 | 1580 | 5 | GP |



RIGID DITCH CLEANING BUCKETS

Description: ditch cleaning bucket with interchangeable blade, direct fit on pins or a quick coupler, blade HB500, cutting edges HB400, bottom stripes reinforcing the body HB400

| CODE | Width [mm] | Capacity SAE [L] | Option |
|----------------|------------|------------------|--------|
| DCR-D11-2000mm | 2000 | 1000 | LT* |
| DCR-D11-2200mm | 2200 | 1140 | LT* |

*LT -Optional rear blade



HYDRAULIC DITCH CLEANING BUCKETS

Description: hydraulic ditch cleaning bucket with interchangeable blade, direct fit on pins or a quick coupler, blade HB500, cutting edges HB400, bottom stripes reinforcing the body HB400, 2 x cylinders 2x45°

| CODE | Width [mm] | Capacity SAE [L] | Option |
|----------------|------------|------------------|--------|
| DCH-D11-2000mm | 2000 | 1000 | LT* |
| DCH-D11-2200mm | 2200 | 1140 | LT* |

*LT -Optional rear blade



QUICK COUPLERS

Description: mechanical quick coupler and hydraulic one Type Miller, Lehnhoff, Verachtert, OilQuick

| CODE | Type | Model |
|-------------|------------|--------------------------|
| EQC-D11-LEH | Lehnhoff | MS10; MS21-25 |
| EQC-D11-CW | Verachtert | CW40; CW40S; CW45; CW45S |
| EQC-D11-MI | Miller | - |
| EQC-D11-OQ | OQ/Volvo | OQ70; OQ70/55; OQ80 |



RIPPERS

Description: CAT J tooth system, direct fit on pins or a quick coupler; shank reinforced with HB400 metal sheet

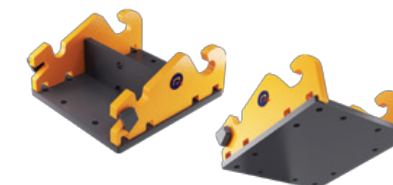
| CODE | Shank thickness [mm] |
|-------|----------------------|
| R-D11 | 60 |



ADAPTER PLATES

Description: adapter plates direct fit on pins or a quick coupler

| CODE | Type |
|------------|----------------------|
| EAP-D11-R | Brackets for coupler |
| EAP-D11-M | Hammer fit |
| EAP-D11-CH | Grapple fit |
| EAP-D11-P | Connectors |

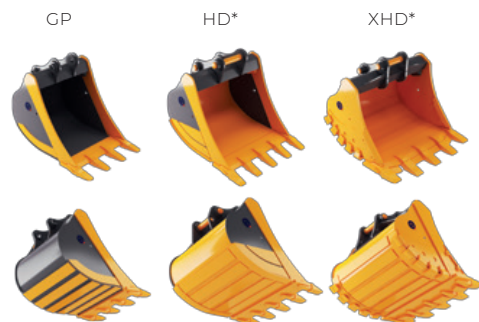


EXCAVATING BUCKETS

Description: standard bucket with teeth, ESCO/ CAT J tooth system; direct fit on pins or a quick coupler, blade HB500, cutting edges HB400, side plate HB400, bottom stripes reinforcing the body HB400

| CODE | Width [mm] | Capacity SAE [L] | Teeth quantity | Type |
|---------------|------------|------------------|----------------|-------------|
| DG-D12-600mm | 600 | 510 | 3 | GP |
| DG-D12-700mm | 700 | 650 | 3 | GP |
| DG-D12-800mm | 800 | 800 | 3 | GP |
| DG-D12-1000mm | 1000 | 1090 | 4 | GP |
| DG-D12-1100mm | 1100 | 1240 | 4 | GP/HD*/XHD* |
| DG-D12-1200mm | 1200 | 1300 | 4 | GP/HD*/XHD* |
| DG-D12-1300mm | 1300 | 1530 | 4 | GP/HD*/XHD* |
| DG-D12-1400mm | 1400 | 1680 | 4 | GP/HD*/XHD* |
| DG-D12-1500mm | 1500 | 1830 | 5 | GP/HD*/XHD* |
| DG-D12-1600mm | 1600 | 1970 | 5 | GP/HD*/XHD* |

*HD version - body HB400
*XHD version - internal stripes HB400; straight or trapezoidal blade, protection of cutting sides, side heel shrouds, body HB400, side plate HB400, lip segments protection



SKELETON BUCKETS

Description: skeleton bucket with teeth, ESCO/ CAT J tooth system; direct fit on pins or a quick coupler, blade HB500, cutting edges HB400, side plate HB400, bars HB400

| CODE | Width [mm] | Capacity SAE [L] | Teeth quantity | Type |
|---------------|------------|------------------|----------------|------|
| DS-D12-600mm | 600 | 510 | 3 | GP |
| DS-D12-700mm | 700 | 650 | 3 | GP |
| DS-D12-800mm | 800 | 800 | 3 | GP |
| DS-D12-1000mm | 1000 | 1090 | 4 | GP |
| DS-D12-1100mm | 1100 | 1240 | 4 | GP |
| DS-D12-1200mm | 1200 | 1390 | 4 | GP |
| DS-D12-1300mm | 1300 | 1530 | 4 | GP |
| DS-D12-1400mm | 1400 | 1680 | 4 | GP |
| DS-D12-1500mm | 1500 | 1830 | 5 | GP |
| DS-D12-1600mm | 1600 | 1970 | 5 | GP |



RIGID DITCH CLEANING BUCKETS

Description: ditch cleaning bucket with interchangeable blade, direct fit on pins or a quick coupler, blade HB500, cutting edges HB400, bottom stripes reinforcing the body HB400

| CODE | Width [mm] | Capacity SAE [L] | Option |
|----------------|------------|------------------|--------|
| DCR-D12-2000mm | 2000 | 1240 | LT* |
| DCR-D12-2200mm | 2200 | 1370 | LT* |
| DCR-D12-2400mm | 2400 | 1500 | LT* |

*LT -Optional rear blade



HYDRAULIC DITCH CLEANING BUCKETS

Description: hydraulic ditch cleaning bucket with interchangeable blade, direct fit on pins or a quick coupler, blade HB500, cutting edges HB400, bottom stripes reinforcing the body HB400, 2 x cylinders 2x45°

| CODE | Width [mm] | Capacity SAE [L] | Option |
|----------------|------------|------------------|--------|
| DCH-D12-2000mm | 2000 | 1240 | LT* |
| DCH-D12-2200mm | 2200 | 1370 | LT* |
| DCH-D12-2400mm | 2400 | 1500 | LT* |

*LT -Optional rear blade



QUICK COUPLERS

Description: mechanical quick coupler and hydraulic one Type Miller, Lehnhoff, Verachtert, OilQuick

| CODE | Type | Model |
|-------------|------------|---------------|
| EQC-D12-LEH | Lehnhoff | MS10; MS21-25 |
| EQC-D12-CW | Verachtert | CW45; CW45S |
| EQC-D12-MI | Miller | - |
| EQC-D12-OQ | OQ/Volvo | OQ80 |



RIPPERS

Description: CAT J tooth system, direct fit on pins or a quick coupler; shank reinforced with HB400 metal sheet

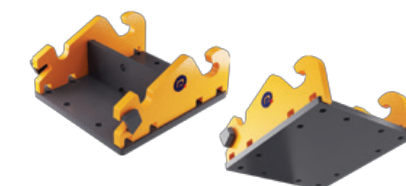
| CODE | Shank thickness [mm] |
|-------|----------------------|
| R-D12 | 60 |



ADAPTER PLATES

Description: adapter plates direct fit on pins or a quick coupler

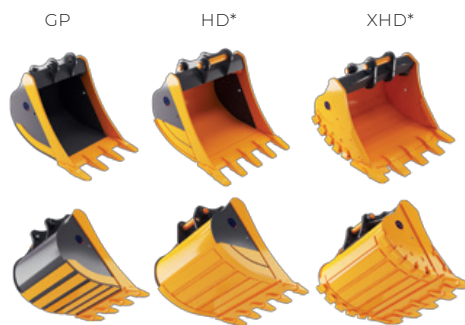
| CODE | Type |
|------------|----------------------|
| EAP-D12-R | Brackets for coupler |
| EAP-D12-M | Hammer fit |
| EAP-D12-CH | Grapple fit |
| EAP-D12-P | Connectors |



EXCAVATING BUCKETS

Description: standard bucket with teeth, ESCO/CAT J tooth system, direct fit on pins or a quick coupler; blade HB500, cutting edges HB400, side plates HB400, bottom stripes reinforcing the body HB400

| CODE | Width [mm] | Capacity SAE [L] | Teeth quantity | Type |
|---------------|------------|------------------|----------------|-------------|
| DG-D13-700mm | 700 | 650 | 3 | GP |
| DG-D13-800mm | 800 | 800 | 3 | GP |
| DG-D13-900mm | 900 | 960 | 3 | GP |
| DG-D13-1000mm | 1000 | 1110 | 3 | GP |
| DG-D13-1100mm | 1100 | 1270 | 4 | GP/HD*/XHD* |
| DG-D13-1200mm | 1200 | 1420 | 4 | GP/HD*/XHD* |
| DG-D13-1300mm | 1300 | 1570 | 4 | GP/HD*/XHD* |
| DG-D13-1400mm | 1400 | 1730 | 4 | GP/HD*/XHD* |
| DG-D13-1500mm | 1500 | 1880 | 5 | GP/HD*/XHD* |
| DG-D13-1600mm | 1600 | 2040 | 5 | GP/HD*/XHD* |
| DG-D13-1700mm | 1700 | 2190 | 5 | GP/HD*/XHD* |



*HD version - body HB400
*XHD version - internal strips HB400; straight or trapezoidal blade, cutting edges protection, side heel shrouds, body HB400, lip segments protection

SKELETON BUCKETS

Description: skeleton bucket with teeth, ESCO/ CAT J tooth system; direct fit on pins or a quick coupler, blade HB500, cutting edges HB400, side plate HB400, bars HB400

| CODE | Width [mm] | Capacity SAE [L] | Teeth quantity | Type |
|---------------|------------|------------------|----------------|------|
| DS-D13-700mm | 700 | 650 | 3 | GP |
| DS-D13-800mm | 800 | 800 | 3 | GP |
| DS-D13-900mm | 900 | 960 | 3 | GP |
| DS-D13-1000mm | 1000 | 1110 | 3 | GP |
| DS-D13-1100mm | 1100 | 1270 | 4 | GP |
| DS-D13-1200mm | 1200 | 1420 | 4 | GP |
| DS-D13-1300mm | 1300 | 1570 | 4 | GP |
| DS-D13-1400mm | 1400 | 1730 | 4 | GP |
| DS-D13-1500mm | 1500 | 1880 | 5 | GP |
| DS-D13-1600mm | 1600 | 2040 | 5 | GP |
| DS-D13-1700mm | 1700 | 2190 | 5 | GP |



RIGID DITCH CLEANING BUCKETS

Description: ditch cleaning bucket with interchangeable blade, direct fit on pins or a quick coupler, blade HB500, cutting edges HB400, bottom stripes reinforcing the body HB400

| CODE | Width [mm] | Capacity SAE [L] | Option |
|----------------|------------|------------------|--------|
| DCR-D13-2200mm | 2200 | 1680 | LT* |
| DCR-D13-2400mm | 2400 | 1840 | LT* |

*LT -Optional rear blade



HYDRAULIC DITCH CLEANING BUCKETS

Description: hydraulic ditch cleaning bucket with interchangeable blade, direct fit on pins or a quick coupler, blade HB500, cutting edges HB400, bottom stripes reinforcing the body HB400, 2 x cylinders 2x45°

| CODE | Width [mm] | Capacity SAE [L] | Option |
|----------------|------------|------------------|--------|
| DCH-D13-2200mm | 2200 | 1680 | LT* |
| DCH-D13-2400mm | 2400 | 1840 | LT* |

*LT -Optional rear blade



QUICK COUPLERS

Description: mechanical quick coupler and hydraulic one Type Miller, Lehnhoff, Verachttert, OilQuick

| CODE | Type | Model |
|-------------|-------------|---------------|
| EQC-D13-LEH | Lehnhoff | MS10; MS21-25 |
| EQC-D13-CW | Verachttert | CW45; CW45S |
| EQC-D13-MI | Miller | - |
| EQC-D13-OQ | OQ/Volvo | OQ80; OQ90 |



RIPPERS

Description: CAT J tooth system, direct fit on pins or a quick coupler; shank reinforced with HB400 metal sheet

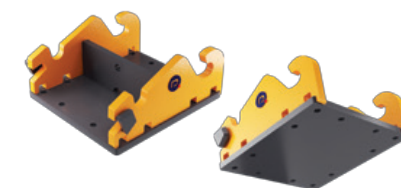
| CODE | Shank thickness [mm] |
|-------|----------------------|
| R-D13 | 80 |



ADAPTER PLATES

Description: adapter plates direct fit on pins or a quick coupler

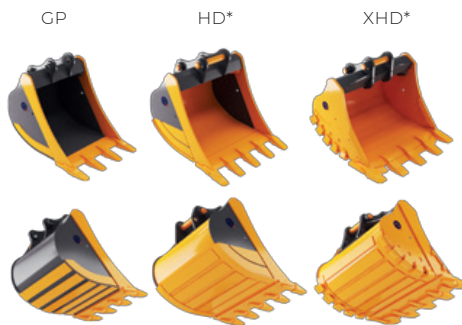
| CODE | Type |
|------------|----------------------|
| EAP-D13-R | Brackets for coupler |
| EAP-D13-M | Hammer fit |
| EAP-D13-CH | Grapple fit |
| EAP-D13-P | Connectors |



EXCAVATING BUCKETS

Description: standard bucket with teeth, ESCO/CAT J tooth system, direct fit on pins or a quick coupler; blade HB500, cutting edges HB400, side plates HB400, bottom stripes reinforcing the body HB400

| CODE | Width [mm] | Capacity SAE [L] | Teeth quantity | Type |
|---------------|------------|------------------|----------------|-------------|
| DG-D14-1000mm | 1000 | 1320 | 3 | GP/HD*/XHD* |
| DG-D14-1200mm | 1200 | 1680 | 4 | GP/HD*/XHD* |
| DG-D14-1500mm | 1500 | 2220 | 5 | GP/HD*/XHD* |
| DG-D14-1600mm | 1600 | 2400 | 5 | GP/HD*/XHD* |
| DG-D14-1800mm | 1800 | 2800 | 6 | GP/HD*/XHD* |
| DG-D14-1900mm | 1900 | 3000 | 6 | GP/HD*/XHD* |
| DG-D14-2000mm | 2000 | 3200 | 6 | GP/HD*/XHD* |



*HD version - body HB400

*XHD version - internal strips HB400; straight or trapezoidal blade, cutting edges protection, side heel shrouds, body HB400, lip segments protection

SKELETON BUCKETS

Description: skeleton bucket with teeth, ESCO/ CAT J tooth system; direct fit on pins or a quick coupler, blade HB500, cutting edges HB400, side plate HB400, bars HB400

| CODE | Width [mm] | Capacity SAE [L] | Teeth quantity | Type |
|---------------|------------|------------------|----------------|------|
| DS-D14-1000mm | 1000 | 1320 | 3 | GP |
| DS-D14-1200mm | 1200 | 1680 | 4 | GP |
| DS-D14-1500mm | 1500 | 2220 | 5 | GP |
| DS-D14-1600mm | 1600 | 2400 | 5 | GP |
| DS-D14-1800mm | 1800 | 2800 | 6 | GP |
| DS-D14-1900mm | 1900 | 3000 | 6 | GP |
| DS-D14-2000mm | 2000 | 3200 | 6 | GP |



QUICK COUPLERS

Description: mechanical quick coupler and hydraulic one Type Miller, Verachttert, OilQuick

| CODE | Type | Model |
|------------|-------------|--------------------------|
| EQC-D14-CW | Verachttert | CW45; CW45S; CW55; CW55S |
| EQC-D14-MI | Miller | - |
| EQC-D13-OQ | OQ/Volvo | OQ90 |



RIPPERS

Description: CAT J tooth system, direct fit on pins or a quick coupler; shank reinforced with HB400 metal sheet

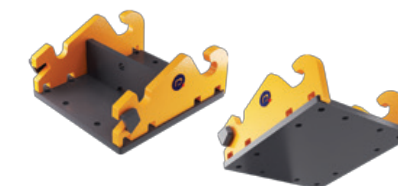
| CODE | Shank thickness [mm] |
|-------|----------------------|
| R-D14 | 100 |



ADAPTER PLATES

Description: adapter plates direct fit on pins or a quick coupler

| CODE | Type |
|------------|----------------------|
| EAP-D14-R | Brackets for coupler |
| EAP-D14-M | Hammer fit |
| EAP-D14-CH | Grapple fit |
| EAP-D14-P | Connectors |



WHEEL LOADERS



WHEEL LOADERS

Group
W2

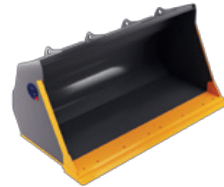
Operating weight
4 - 5,5T

STANDARD BUCKETS

Description: standard bucket with skids HB400; ESCO/CAT J/BOFORS tooth system; quick coupler fit; blades HB500; side bar HB400;

| CODE | Width [mm] | Capacity SAE [L] | Option |
|--------------|------------|------------------|--------|
| WGP-W2-800L | 1800 | 800 | LW/Z* |
| WGP-W2-1000L | 1800 | 1000 | LW/Z* |
| WGP-W2-1200L | 1800 | 1200 | LW/Z* |

*LW/Z - optional interchangeable blade / teeth

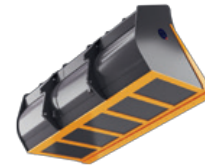
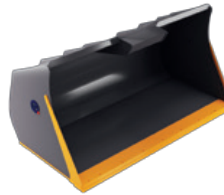


BUCKETS WITH INCREASED CAPACITY

Description: light material bucket max. 500kg/m³; blade HB500; bottom stripes HB400; side bar HB400; quick coupler fit

| CODE | Width [mm] | Capacity SAE [L] | Option |
|--------------|------------|------------------|--------|
| WLM-W2-1500L | 1800 | 1500 | LW* |
| WLM-W2-1800L | 2000 | 1800 | LW* |

*LW - optional interchangeable blade



SKELETON BUCKETS

Description: bars spacing can be adjusted; blade HB500; side bar HB400; quick coupler fit; ESCO/CAT J/BOFORS tooth system

| CODE | Width [mm] | Capacity SAE [L] | Option |
|------------|------------|------------------|--------|
| WS-W2-600L | 1900 | 600 | LW/Z* |

*LW/Z - optional interchangeable blade / teeth



46

DEKPOL STEEL

WHEEL LOADERS

Group
W2

Operating weight
4 - 5,5T

BUCKETS WITH DOWNHOLDER

Description: blade HB500; skids HB400; side bar HB400; quick coupler fit

| CODE | Width [mm] | Capacity SAE [L] | Option |
|-------------|------------|------------------|--------|
| WC-W2-800L | 1900 | 800 | LW* |
| WC-W2-1000L | 1900 | 1000 | LW* |

*LW - optional interchangeable blade

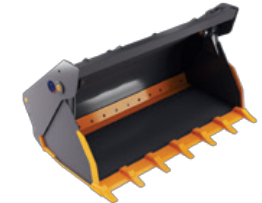


4IN1 BUCKETS

Description: blade HB500; bottom stripes HB400; side bar HB400; direct fit on pins or a quick coupler; ESCO/CAT J/BOFORS tooth system

| CODE | Width [mm] | Capacity SAE [L] | Option |
|--------------|------------|------------------|--------|
| W4/1-W2-800L | 1900 | 800 | LW/Z* |

*LW/Z - optional interchangeable blade / teeth



FORKS

Description: fork carrier standard FEM2A; quick coupler fit

| CODE | Lifting capacity per pair | Forks | Carrier width |
|---------------|---------------------------|-------------|---------------|
| WMF-W2-2500KG | 2500kg | 100x40x1200 | 1200 |
| WMF-W2-3000KG | 3000kg | 125x45x1200 | 1200 |



47

DEKPOL STEEL

WHEEL LOADERS

Group
W3

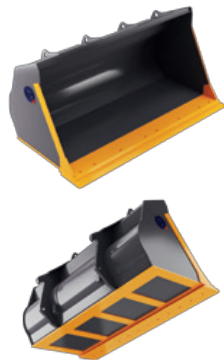
Operating weight
5,5 - 6,5T

STANDARD BUCKETS

Description: standard bucket with skids HB400; ESCO/CAT J/BOFORS tooth system; quick coupler fit; blades HB500; side bar HB400;

| CODE | Width [mm] | Capacity SAE [L] | Option |
|--------------|------------|------------------|--------|
| WGP-W3-900L | 2050 | 900 | LW/Z* |
| WGP-W3-1100L | 2050 | 1100 | LW/Z* |
| WGP-W3-1200L | 2050 | 1200 | LW/Z* |

*LW/Z - optional interchangeable blade / teeth

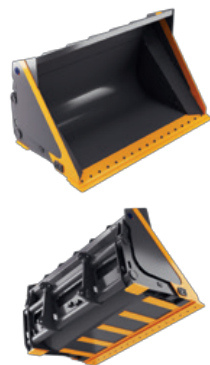


HIGH DUMP BUCKETS

Description: bucket with cylinders placed from outside; blade HB500; bottom stripes HB400; side bar HB400; quick coupler fit; *spoil density max. 600kg/m³

| CODE | Width [mm] | Capacity SAE [L] | Option | Type |
|--------------|------------|------------------|--------|------------------------|
| WHT-W3-1500L | 2100 | 1500 | LW* | Standard bucket |
| WHT-W3-2000L | 2100 | 2000 | LW* | Light material bucket* |

*LW - optional interchangeable blade

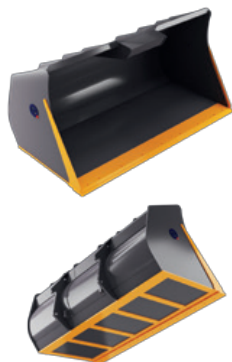


BUCKETS WITH INCREASED CAPACITY

Description: light material bucket max. 600kg/m³; blade HB500; bottom stripes HB400; side bar HB400; quick coupler fit;

| CODE | Width [mm] | Capacity SAE [L] | Option |
|--------------|------------|------------------|--------|
| WLM-W3-1500L | 2100 | 1500 | LW* |
| WLM-W3-2000L | 2100 | 2000 | LW* |

*LW - optional interchangeable blade



48

DEKPOL STEEL

WHEEL LOADERS

Group
W3

Operating weight
5,5 - 6,5T

SKELETON BUCKETS

Description: bars spacing can be adjusted; blade HB500; side bar HB400; quick coupler fit; ESCO/CAT J/BOFORS tooth system

| CODE | Width [mm] | Capacity SAE [L] | Option |
|------------|------------|------------------|--------|
| WS-W3-600L | 1900 | 600 | LW/Z* |
| WS-W3-800L | 2050 | 800 | LW/Z* |

*LW/Z - optional interchangeable blade / teeth



4IN1 BUCKETS

Description: blade HB500; bottom stripes HB400; side bar HB400; quick coupler fit; ESCO/CAT J/BOFORS tooth system;

| CODE | Width [mm] | Capacity SAE [L] | Option |
|--------------|------------|------------------|--------|
| W4/1-W3-800L | 1900 | 800 | LW/Z* |
| W4/1-W3-900L | 2050 | 900 | LW/Z* |

*LW/Z - optional interchangeable blade / teeth



BUCKETS WITH DOWNHOLDER

Description: blade HB500; bottom stripes HB400; side bar HB400; quick coupler fit;

| CODE | Width [mm] | Capacity SAE [L] | Option |
|-------------|------------|------------------|--------|
| WC-W3-1000L | 1900 | 1000 | LW* |
| WC-W3-1400L | 2050 | 1400 | LW* |

*LW - optional interchangeable blade



FORKS

Description: fork carrier standard FEM2A; quick coupler fit

| CODE | Lifting capacity per pair | Forks | Carrier width |
|---------------|---------------------------|-------------|---------------|
| WMF-W3-2500KG | 2500kg | 100x40x1200 | 1500 |
| WMF-W3-3000KG | 3000kg | 125x50x1200 | 1500 |



49

DEKPOL STEEL

WHEEL LOADERS

Group
W4

Operating weight
7 - 10T

STANDARD BUCKETS

Description: standard bucket with rear bar or screwed skids; ESCO/CAT J/BOFORS tooth system; direct fit on pins or a quick coupler; blades HB500; side bar HB400; bottom stripes HB400;

| CODE | Width [mm] | Capacity SAE [L] | Option | Dedicated to |
|--------------|------------|------------------|--------|----------------------------|
| WGP-W4-1400L | 2250 | 1400 | LW/Z* | Volvo, parallel kinematics |
| WGP-W4-1600L | 2250 | 1600 | LW/Z* | Volvo, parallel kinematics |
| WGP-W4-1800L | 2250 | 1800 | LW/Z* | Volvo, parallel kinematics |
| WGP-W4-1300L | 2400 | 1300 | LW/Z* | Cat, kinematics type Z |
| WGP-W4-1500L | 2400 | 1500 | LW/Z* | Cat, kinematics type Z |

*LW/Z - optional interchangeable blade / teeth

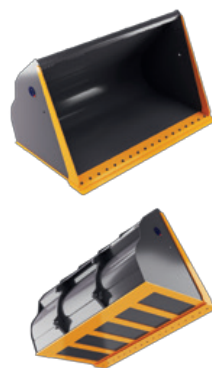


BUCKETS WITH INCREASED CAPACITY

Description: light material bucket max. 600kg/m³; blade HB500; bottom stripes HB400; side bar HB400; direct fit on pins or a quick coupler

| CODE | Width [mm] | Capacity SAE [L] | Option |
|--------------|------------|------------------|--------|
| WLM-W4-1800L | 2400 | 1800 | LW* |
| WLM-W4-2000L | 2400 | 2000 | LW* |
| WLM-W4-2500L | 2400 | 2500 | LW* |

*LW - optional interchangeable blade

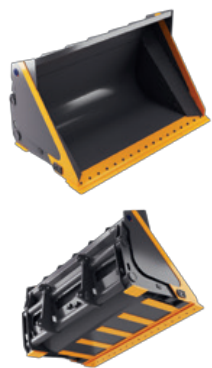


HIGH DUMP BUCKETS

Description: bucket with cylinders placed from outside; blade HB500; bottom stripes HB400; side bar HB400; direct fit on pins or a quick coupler; *spoil density max. 600kg/m³

| CODE | Width [mm] | Capacity SAE [L] | Option | Type |
|--------------|------------|------------------|--------|------------------------|
| WHT-W4-2000L | 2400 | 2000 | LW* | Standard bucket |
| WHT-W4-2300L | 2400 | 2300 | LW* | Standard bucket |
| WHT-W4-3000L | 2400 | 3000 | LW* | Light material bucket* |

*LW - optional interchangeable blade



50

DEKPOL STEEL

WHEEL LOADERS

Group
W4

Operating weight
7 - 10T

SKELETON BUCKETS

Description: bars spacing can be adjusted; blade HB500; side bar HB400; direct fit on pins or a quick coupler; ESCO/CAT J/BOFORS tooth system

| CODE | Width [mm] | Capacity SAE [L] | Option |
|-------------|------------|------------------|--------|
| WS-W4-1200L | 2250 | 1200 | LW/Z* |
| WS-W4-1500L | 2400 | 1500 | LW/Z* |

*LW/Z - optional interchangeable blade / teeth



BUCKETS WITH DOWNHOLDER

Description: blade HB500; bottom stripes HB400; side bar HB400; quick coupler fit;

| CODE | Width [mm] | Capacity SAE [L] | Option |
|-------------|------------|------------------|--------|
| WC-W4-1600L | 2250 | 1600 | LW* |
| WC-W4-1800L | 2400 | 1800 | LW* |
| WC-W4-2000L | 2400 | 2000 | LW* |

*LW - optional interchangeable blade



4IN1 BUCKETS

Description: blade HB500; bottom stripes HB400; side bar HB400; direct fit on pins or a quick coupler; ESCO/CAT J/BOFORS tooth system

| CODE | Width [mm] | Capacity SAE [L] | Option |
|---------------|------------|------------------|--------|
| W4/1-W4-1300L | 2250 | 1300 | LW/Z* |
| W4/1-W4-1500L | 2400 | 1500 | LW/Z* |

*LW/Z - optional interchangeable blade / teeth



FORKS

Description: fork carrier standard FEM2A; quick coupler fit

| CODE | Lifting capacity per pair | Forks | Carrier width |
|---------------|---------------------------|-------------|---------------|
| WMF-W4-3500KG | 3500kg | 100x40x1200 | 1500 |
| WMF-W4-5000KG | 5000kg | 125x50x1200 | 1500 |



LOADER QUICK COUPLERS

Description: quick coupler to meet the standards from Volvo, Komatsu, CAT, JCB, Liebherr and others; hydraulic locking system

| CODE | Quick coupler type | Version |
|-----------|--------------------|-----------|
| WQC-W4-BM | TYPE VOLVO BM | Hydraulic |



51

DEKPOL STEEL

WHEEL LOADERS

Group
W5

Operating weight
11 - 15,5T

STANDARD BUCKETS

Description: standard bucket with rear bar or screwed skids; ESCO/CAT J/BOFORS tooth system; direct fit on pins or a quick coupler; blades HB500; side bar HB400; bottom stripes HB400;

| CODE | Width [mm] | Capacity SAE [L] | Option | Dedicated to |
|--------------|------------|------------------|--------|----------------------------|
| WGP-W5-1800L | 2550 | 1800 | LW/Z* | Volvo, parallel kinematics |
| WGP-W5-2000L | 2550 | 2000 | LW/Z* | Volvo, parallel kinematics |
| WGP-W5-2200L | 2550 | 2200 | LW/Z* | Volvo, parallel kinematics |
| WGP-W5-1900L | 2550 | 1900 | LW/Z* | Cat, kinematics type Z |
| WGP-W5-2100L | 2550 | 2100 | LW/Z* | Cat, kinematics type Z |
| WGP-W5-2300L | 2550 | 2300 | LW/Z* | Cat, kinematics type Z |

*LW/Z - optional interchangeable blade / teeth

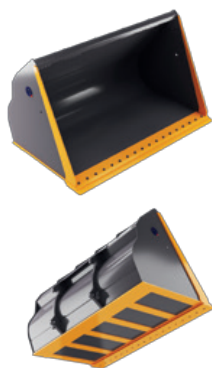


BUCKETS WITH INCREASED CAPACITY

Description: light material bucket max. 600kg/m³; blade HB500; bottom stripes HB400; side bar HB400; direct fit on pins or a quick coupler

| CODE | Width [mm] | Capacity SAE [L] | Option |
|--------------|------------|------------------|--------|
| WLM-W5-3500L | 2650 | 3500 | LW* |
| WLM-W5-4000L | 2650 | 4000 | LW* |
| WLM-W5-5000L | 2750 | 5000 | LW* |
| WLM-W5-6000L | 2750 | 6000 | LW* |

*LW - optional interchangeable blade



HIGH DUMP BUCKETS

Description: bucket with cylinders placed from outside; blade HB500; bottom stripes HB400; side bar HB400; direct fit on pins or a quick coupler; *spoil density max. 600kg/m³

| CODE | Width [mm] | Capacity SAE [L] | Option | Type |
|--------------|------------|------------------|--------|------------------------|
| WHT-W5-2500L | 2550 | 2500 | LW* | Standard bucket |
| WHT-W5-3000L | 2650 | 3000 | LW* | Standard bucket |
| WHT-W5-4500L | 2750 | 4500 | LW* | Light material bucket* |
| WHT-W5-6000L | 2750 | 6000 | LW* | Light material bucket* |

*LW - optional interchangeable blade



52

DEKPOL STEEL

WHEEL LOADERS

Group
W5

Operating weight
11 - 15,5T

SKELETON BUCKETS

Description: bars spacing can be adjusted; blade HB500; side bar HB400; direct fit on pins or a quick coupler; ESCO/CAT J/BOFORS tooth system

| CODE | Width [mm] | Capacity SAE [L] | Option |
|-------------|------------|------------------|--------|
| WS-W5-1500L | 2550 | 1500 | LW/Z* |
| WS-W5-2000L | 2550 | 2000 | LW/Z* |

*LW/Z - optional interchangeable blade / teeth



BUCKETS WITH DOWNHOLDER

Description: blade HB500; bottom stripes HB400; side bar HB400; direct fit on pins or a quick coupler;

| CODE | Width [mm] | Capacity SAE [L] | Option |
|-------------|------------|------------------|--------|
| WC-W5-1800L | 2550 | 1800 | LW* |
| WC-W5-2500L | 2550 | 2500 | LW* |

*LW - optional interchangeable blade



4IN1 BUCKETS

Description: blade HB500; bottom stripes HB400; side bar HB400; direct fit on pins or a quick coupler; ESCO/CAT J/BOFORS tooth system

| CODE | Width [mm] | Capacity SAE [L] | Option |
|---------------|------------|------------------|--------|
| W4/1-W5-1900L | 2550 | 1900 | LW/Z* |

*LW/Z - optional interchangeable blade / teeth



FORKS

Description: fork carrier standard FEM4A; direct fit on pins or a quick coupler

| CODE | Lifting capacity per pair | Forks | Carrier width |
|---------------|---------------------------|-------------|---------------|
| WMF-W5-6000KG | 6000kg | 150x50x1200 | 1500 |



LOADER QUICK COUPLERS

Description: quick coupler to meet the standards from Volvo, Komatsu, CAT, JCB, Liebherr and others; hydraulic locking system

| CODE | Quick coupler type | Version |
|-----------|--------------------|-----------|
| WQC-W5-BM | TYPE VOLVO BM | Hydraulic |



53

DEKPOL STEEL

WHEEL LOADERS

Group
W6

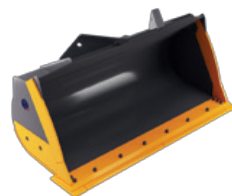
Operating weight
15,5 - 17T

STANDARD BUCKETS

Description: standard bucket with rear bar or screwed skids; ESCO/CAT J/BOFORS tooth system; direct fit on pins or a quick coupler; blades HB500; side bar HB400; bottom stripes HB400;

| CODE | Width [mm] | Capacity SAE [L] | Option | Dedicated to |
|--------------|------------|------------------|--------|----------------------------|
| WGP-W6-2400L | 2750 | 2400 | LW/Z* | Volvo, parallel kinematics |
| WGP-W6-2600L | 2750 | 2600 | LW/Z* | Volvo, parallel kinematics |
| WGP-W6-2500L | 2730 | 2500 | LW/Z* | Cat, kinematics type Z |
| WGP-W6-2900L | 2730 | 2900 | LW/Z* | Cat, kinematics type Z |

*LW/Z - optional interchangeable blade / teeth

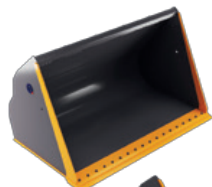


BUCKETS WITH INCREASED CAPACITY

Description: light material bucket max. 600kg/m³; blade HB500; bottom stripes HB400; side bar HB400; direct fit on pins or a quick coupler

| CODE | Width [mm] | Capacity SAE [L] | Option |
|--------------|------------|------------------|--------|
| WLM-W6-4000L | 2750 | 4000 | LW* |
| WLM-W6-7000L | 3000 | 7000 | LW* |

*LW - optional interchangeable blade



ROCK BUCKETS

Description: rock bucket with screwed skids, grate to prevent scattering, ESCO/CAT J tooth system; direct fit on pins or a quick coupler; blades HB500; side bar HB400; bottom stripes HB400; body HB400; sides HB400

| CODE | Width [mm] | Capacity SAE [L] | Option | Dedicated to |
|-------------------|------------|------------------|--------|----------------------------|
| WHD-W6-2200L-2650 | 2650 | 2200 | Z, S* | Volvo, parallel kinematics |
| WHD-W6-2200L-2730 | 2730 | 2200 | Z, S* | Cat, kinematics type Z |

*Z/S - teeth, segments

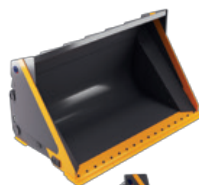


HIGH DUMP BUCKETS

Description: bucket with cylinders placed from outside; blade HB500; bottom stripes HB400; side bar HB400; direct fit on pins or a quick coupler; *spoil density max. 600kg/m³

| CODE | Width [mm] | Capacity SAE [L] | Option | Type |
|--------------|------------|------------------|--------|------------------------|
| WHT-W6-4000L | 2750 | 4000 | LW* | Standard bucket |
| WHT-W6-7000L | 3000 | 7000 | LW* | Light material bucket* |

*LW - optional interchangeable blade



54

DEKPOL STEEL

WHEEL LOADERS

Group
W6

Operating weight
15,5 - 17T

SKELETON BUCKETS

Description: bars spacing can be adjusted; blade HB500; side bar HB400; direct fit on pins or a quick coupler; ESCO/CAT J/BOFORS tooth system

| CODE | Width [mm] | Capacity SAE [L] | Option |
|-------------|------------|------------------|--------|
| WS-W6-2000L | 2750 | 2000 | LW/Z* |
| WS-W6-2500L | 2750 | 2500 | LW/Z* |

*LW/Z - optional interchangeable blade / teeth



BUCKETS WITH DOWNHOLDER

Description: blade HB500; bottom stripes HB400; side bar HB400; direct fit on pins or a quick coupler;

| CODE | Width [mm] | Capacity SAE [L] | Option |
|-------------|------------|------------------|--------|
| WC-W6-2500L | 2750 | 2500 | LW* |
| WC-W6-3000L | 2750 | 3000 | LW* |

*LW - optional interchangeable blade



4IN1 BUCKETS

Description: blade HB500; bottom stripes HB400; side bar HB400; direct fit on pins or a quick coupler; ESCO/CAT J/BOFORS tooth system

| CODE | Width [mm] | Capacity SAE [L] | Option |
|---------------|------------|------------------|--------|
| W4/I-W6-2200L | 2750 | 2200 | LW/Z* |
| W4/I-W6-2500L | 2750 | 2500 | LW/Z* |

*LW/Z - optional interchangeable blade / teeth



FORKS

Description: fork carrier standard FEM4A; direct fit on pins or a quick coupler

| CODE | Lifting capacity per pair | Forks | Carrier width |
|--------------------|---------------------------|-------------|---------------|
| WMF-W6-6000KG | 6000kg | 150x50x1200 | 1500 |
| WMF-W6-8000KG-1200 | 8000kg | 150x60x1200 | 1500 |
| WMF-W6-8000KG-1600 | 8000kg | 150x60x1600 | 1500 |



LOADER QUICK COUPLERS

Description: quick coupler to meet the standards from Volvo, Komatsu, CAT, JCB, Liebherr and others; hydraulic locking system

| CODE | Quick coupler type | Version |
|-----------|--------------------|-----------|
| WQC-W6-BM | TYPE VOLVO BM | Hydraulic |



55

DEKPOL STEEL

WHEEL LOADERS

Group
W7

Operating weight
18 - 22T

STANDARD BUCKETS

Description: standard bucket with rear bar or screwed skids; ESCO/CAT J tooth system; direct fit on pins or a quick coupler; blades HB500; side bar HB400; bottom stripes HB400;

| CODE | Width [mm] | Capacity SAE [L] | Option | Dedicated to |
|--------------|------------|------------------|--------|----------------------------|
| WGP-W7-2500L | 2880 | 2500 | LW/Z* | Volvo, parallel kinematics |
| WGP-W7-3000L | 3000 | 3000 | LW/Z* | Volvo, parallel kinematics |
| WGP-W7-3500L | 3000 | 3500 | LW/Z* | Volvo, parallel kinematics |
| WGP-W7-3100L | 2920 | 3100 | LW/Z* | Cat, kinematics type Z |
| WGP-W7-3400L | 2920 | 3400 | LW/Z* | Cat, kinematics type Z |
| WGP-W7-3600L | 2920 | 3600 | LW/Z* | Cat, kinematics type Z |

*LW/Z - optional interchangeable blade / teeth

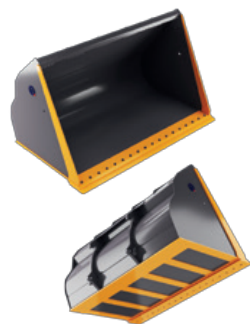


BUCKETS WITH INCREASED CAPACITY

Description: light material bucket max. 600kg/m³; blade HB500; bottom stripes HB400; side bar HB400; direct fit on pins or a quick coupler

| CODE | Width [mm] | Capacity SAE [L] | Option |
|--------------|------------|------------------|--------|
| WLM-W7-5500L | 3000 | 5500 | LW* |
| WLM-W7-7000L | 3000 | 7000 | LW* |
| WLM-W7-9500L | 3400 | 9500 | LW* |

*LW - optional interchangeable blade



ROCK BUCKETS

Description: rock bucket with screwed skids, grate to prevent scattering, ESCO/CAT J tooth system; direct fit on pins or a quick coupler; blades HB500; side bar HB400; bottom stripes HB400; body HB400; sides HB400

| CODE | Width [mm] | Capacity SAE [L] | Option | Dedicated to |
|--------------|------------|------------------|--------|----------------------------|
| WHD-W7-2600L | 2880 | 2600 | Z, S* | Volvo, parallel kinematics |
| WHD-W7-3000L | 2880 | 3000 | Z, S* | Volvo, parallel kinematics |
| WHD-W7-2900L | 3035 | 2900 | Z, S* | Cat, kinematics type Z |

*Z/S - teeth, segments

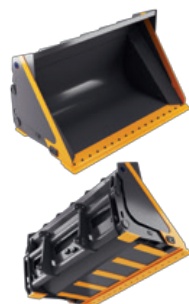


HIGH DUMP BUCKETS

Description: bucket with cylinders placed from outside; blade HB500; bottom stripes HB400; side bar HB400; direct fit on pins or a quick coupler; *spoil density max. 600kg/m³

| CODE | Width [mm] | Capacity SAE [L] | Option | Type |
|--------------|------------|------------------|--------|------------------------|
| WHT-W7-5000L | 3000 | 5000 | LW* | Standard bucket |
| WHT-W7-7000L | 3000 | 7000 | LW* | Light material bucket* |
| WHT-W7-9500L | 3400 | 9500 | LW* | Light material bucket* |

*LW - optional interchangeable blade



56

DEKPOL STEEL

WHEEL LOADERS

Group
W7

Operating weight
18 - 22T

SKELETON BUCKETS

Description: bars spacing can be adjusted; blade HB500; side bar HB400; direct fit on pins or a quick coupler; ESCO/CAT J tooth system

| CODE | Width [mm] | Capacity SAE [L] | Option |
|-------------|------------|------------------|--------|
| WS-W7-2500L | 2900 | 2500 | LW/Z* |
| WS-W7-3000L | 2900 | 3000 | LW/Z* |
| WS-W7-3500L | 2900 | 3500 | LW/Z* |

*LW/Z - optional interchangeable blade / teeth



BUCKETS WITH DOWNHOLDER

Description: blade HB500; bottom stripes HB400; side bar HB400; direct fit on pins or a quick coupler;

| CODE | Width [mm] | Capacity SAE [L] | Option |
|-------------|------------|------------------|--------|
| WC-W7-3500L | 2900 | 3500 | LW* |
| WC-W7-4000L | 2900 | 4000 | LW* |
| WC-W7-4500L | 2900 | 4500 | LW* |

*LW - optional interchangeable blade



FORKS

Description: fork carrier standard FEM4A; direct fit on pins or a quick coupler

| CODE | Lifting capacity per pair | Forks | Carrier width |
|--------------------|---------------------------|-------------|---------------|
| WMF-W7-8000KG-1200 | 8000kg | 150x60x1200 | 1500 |
| WMF-W7-8000KG-1600 | 8000kg | 150x60x1600 | 1500 |
| WMF-W7-10000KG | 10000kg | 150x70x1600 | 1500 |



LOADER QUICK COUPLERS

Description: quick coupler to meet the standards from Volvo, Komatsu, CAT, JCB, Liebherr and others; hydraulic locking system

| CODE | Quick coupler type | Version |
|-----------|--------------------|-----------|
| WQC-W7-BM | TYPE VOLVO BM | Hydraulic |



57

DEKPOL STEEL

WHEEL LOADERS

Group
W8

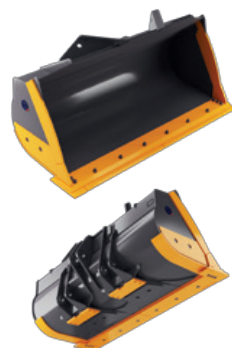
Operating weight
22 - 25T

STANDARD BUCKETS

Description: standard bucket with rear bar or screwed skids; ESCO/CAT J tooth system; direct fit on pins or a quick coupler; blades HB500; side bar HB400; bottom stripes HB400;

| CODE | Width [mm] | Capacity SAE [L] | Option | Dedicated to |
|--------------|------------|------------------|--------|----------------------------|
| WGP-W8-3800L | 3000 | 3800 | LW/Z* | Volvo, parallel kinematics |
| WGP-W8-4300L | 3000 | 4300 | LW/Z* | Volvo, parallel kinematics |
| WGP-W8-4600L | 3200 | 4600 | LW/Z* | Volvo, parallel kinematics |
| WGP-W8-5000L | 3200 | 5000 | LW/Z* | Volvo, parallel kinematics |
| WGP-W8-5500L | 3400 | 5500 | LW/Z* | Volvo, parallel kinematics |
| WGP-W8-4500L | 3200 | 4500 | LW/Z* | Cat, kinematics type Z |
| WGP-W8-4800L | 3200 | 4800 | LW/Z* | Cat, kinematics type Z |
| WGP-W8-5000L | 3200 | 5000 | LW/Z* | Cat, kinematics type Z |

*LW/Z - optional interchangeable blade / teeth

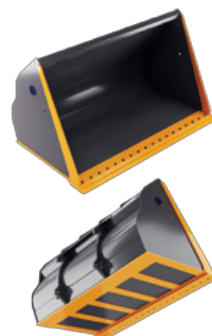


BUCKETS WITH INCREASED CAPACITY

Description: light material bucket max. 600kg/m³; blade HB500; bottom stripes HB400; side bar HB400; direct fit on pins or a quick coupler

| CODE | Width [mm] | Capacity SAE [L] | Option |
|---------------|------------|------------------|--------|
| WLM-W8-6000L | 3200 | 6000 | LW* |
| WLM-W8-7000L | 3400 | 7000 | LW* |
| WLM-W8-10000L | 3700 | 10000 | LW* |
| WLM-W8-12000L | 3700 | 12000 | LW* |

*LW - optional interchangeable blade



ROCK BUCKETS

Description: rock bucket with screwed skids, grate to prevent scattering, ESCO/CAT J tooth system; direct fit on pins or a quick coupler; blades HB500; side bar HB400; bottom stripes HB400; body HB400; sides HB400

| CODE | Width [mm] | Capacity SAE [L] | Option | Dedicated to |
|--------------|------------|------------------|--------|----------------------------|
| WHD-W8-3600L | 3200 | 3600 | Z, S* | Volvo, parallel kinematics |
| WHD-W8-4100L | 3200 | 4100 | Z, S* | Volvo, parallel kinematics |
| WHD-W8-3400L | 3200 | 3400 | Z, S* | Cat, kinematics type Z |
| WHD-W8-3600L | 3200 | 3600 | Z, S* | Cat, kinematics type Z |
| WHD-W8-4000L | 3200 | 4000 | Z, S* | Cat, kinematics type Z |

*Z/S - teeth, segments



58

DEKPOL STEEL

WHEEL LOADERS

Group
W8

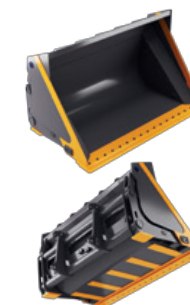
Operating weight
22 - 25T

HIGH DUMP BUCKETS

Description: bucket with cylinders placed from outside; blade HB500; bottom stripes HB400; side bar HB400; direct fit on pins or a quick coupler; *spoil density max. 600kg/m³

| CODE | Width [mm] | Capacity SAE [L] | Option | Type |
|---------------|------------|------------------|--------|------------------------|
| WHT-W8-6000L | 3200 | 6000 | LW* | Standard bucket |
| WHT-W8-7000L | 3400 | 7000 | LW* | Standard bucket |
| WHT-W8-11000L | 3700 | 11000 | LW* | Light material bucket* |
| WHT-W8-13000L | 4000 | 13000 | LW* | Light material bucket* |

*LW - optional interchangeable blade



SKELETON BUCKETS

Description: bars spacing can be adjusted; blade HB500; side bar HB400; direct fit on pins or a quick coupler; ESCO/CAT J tooth system

| CODE | Width [mm] | Capacity SAE [L] | Option |
|-------------|------------|------------------|--------|
| WS-W8-3500L | 3200 | 3500 | LW/Z* |
| WS-W8-4000L | 3200 | 4000 | LW/Z* |
| WS-W8-4500L | 3200 | 4500 | LW/Z* |

*LW/Z - optional interchangeable blade / teeth



FORKS

Description: fork carrier standard FEM4A; direct fit on pins or a quick coupler

| CODE | Lifting capacity per pair | Forks | Carrier width |
|----------------|---------------------------|-------------|---------------|
| WMF-W8-10000KG | 10000kg | 150x70x1600 | 1500 |



LOADER QUICK COUPLERS

Description: quick coupler to meet the standards from Volvo, Komatsu, CAT, JCB, Liebherr and others; hydraulic locking system

| CODE | Quick coupler type | Version |
|------------|--------------------|-----------|
| WQC-W8-BBM | TYPE VOLVO BBM | Hydraulic |



59

DEKPOL STEEL

WHEEL LOADERS

Group
W9

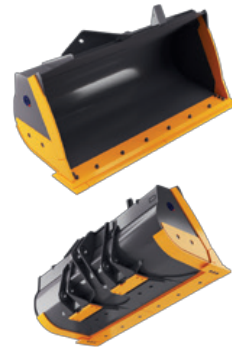
Operating weight
25 - 29T

STANDARD BUCKETS

Description: standard bucket with rear bar or screwed skids; ESCO/CAT J tooth system; direct fit on pins or a quick coupler; blades HB500; side bar HB400; bottom stripes HB400;

| CODE | Width [mm] | Capacity SAE [L] | Option | Dedicated to |
|----------------|------------|------------------|--------|----------------------------|
| WGP-W9-3800L | 3000 | 3800 | LW/Z* | Volvo, parallel kinematics |
| WGP-W9-4300L | 3000 | 4300 | LW/Z* | Volvo, parallel kinematics |
| WGP-W9-4600L | 3200 | 4600 | LW/Z* | Volvo, parallel kinematics |
| WGP-W9-5000L-V | 3200 | 5000 | LW/Z* | Volvo, parallel kinematics |
| WGP-W9-5500L | 3400 | 5500 | LW/Z* | Volvo, parallel kinematics |
| WGP-W9-4500L | 3200 | 4500 | LW/Z* | Cat, kinematics type Z |
| WGP-W9-4800L | 3200 | 4800 | LW/Z* | Cat, kinematics type Z |
| WGP-W9-5000L-C | 3200 | 5000 | LW/Z* | Cat, kinematics type Z |

*LW/Z - optional interchangeable blade / teeth



BUCKETS WITH INCREASED CAPACITY

Description: light material bucket max. 600kg/m³; blade HB500; bottom stripes HB400; side bar HB400; direct fit on pins or a quick coupler

| CODE | Width [mm] | Capacity SAE [L] | Option |
|---------------|------------|------------------|--------|
| WLM-W9-6000L | 3200 | 6000 | LW* |
| WLM-W9-7000L | 3400 | 7000 | LW* |
| WLM-W9-10000L | 3700 | 10000 | LW* |
| WLM-W9-12000L | 3700 | 12000 | LW* |
| WLM-W9-14000L | 4000 | 14000 | LW* |
| WLM-W9-16000L | 4500 | 16000 | LW* |

*LW - optional interchangeable blade



ROCK BUCKETS

Description: rock bucket with screwed skids, grate to prevent scattering; ESCO/CAT J tooth system; direct fit on pins or a quick coupler; blades HB500; side bar HB400; bottom stripes HB400; body HB400; sides HB400

| CODE | Width [mm] | Capacity SAE [L] | Option | Dedicated to |
|----------------|------------|------------------|--------|----------------------------|
| WHD-W9-3600L-V | 3200 | 3600 | Z, S* | Volvo, parallel kinematics |
| WHD-W9-4100L | 3200 | 4100 | Z, S* | Volvo, parallel kinematics |
| WHD-W9-3400L | 3200 | 3400 | Z, S* | Cat, kinematics type Z |
| WHD-W9-3600L-C | 3200 | 3600 | Z, S* | Cat, kinematics type Z |
| WHD-W9-4000L | 3200 | 4000 | Z, S* | Cat, kinematics type Z |

*Z/S - teeth, segments



60

DEKPOL STEEL

WHEEL LOADERS

Group
W9

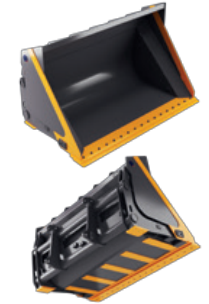
Operating weight
25 - 29T

HIGH DUMP BUCKETS

Description: bucket with cylinders placed from outside; blade HB500; bottom stripes HB400; side bar HB400; direct fit on pins or a quick coupler; *spoil density max. 600kg/m³

| CODE | Width [mm] | Capacity SAE [L] | Option | Type |
|---------------|------------|------------------|--------|------------------------|
| WHT-W9-6000L | 3200 | 6000 | LW* | Standard bucket |
| WHT-W9-7000L | 3400 | 7000 | LW* | Standard bucket |
| WHT-W9-11000L | 3700 | 11000 | LW* | Light material bucket* |
| WHT-W9-13000L | 4000 | 13000 | LW* | Light material bucket* |

*LW - optional interchangeable blade



SKELETON BUCKETS

Description: bars spacing can be adjusted; blade HB500; side bar HB400; direct fit on pins or a quick coupler; ESCO/CAT J tooth system

| CODE | Width [mm] | Capacity SAE [L] | Option |
|-------------|------------|------------------|--------|
| WS-W9-3500L | 3200 | 3500 | LW/Z* |
| WS-W9-4000L | 3200 | 4000 | LW/Z* |
| WS-W9-4500L | 3200 | 4500 | LW/Z* |

*LW/Z - optional interchangeable blade / teeth



LOADER QUICK COUPLERS

Description: quick coupler to meet the standards from Volvo, Komatsu, CAT, JCB, Liebherr and others; hydraulic locking system

| CODE | Quick coupler type | Version |
|------------|--------------------|-----------|
| WQC-W9-BBM | TYPE VOLVO BBM | Hydraulic |



61

DEKPOL STEEL

WHEEL LOADERS

Group
W10

Operating weight
30 - 40T

STANDARD BUCKETS

Description: standard bucket with rear bar or screwed skids; ESCO/CAT J tooth system; direct fit on pins or a quick coupler; blades HB500; side bar HB400; bottom stripes HB400;

| CODE | Width [mm] | Capacity SAE [L] | Option | Dedicated to |
|---------------|------------|------------------|--------|----------------------------|
| WGP-W10-5000L | 3400 | 5000 | LW/Z* | Volvo, parallel kinematics |
| WGP-W10-5500L | 3400 | 5500 | LW/Z* | Volvo, parallel kinematics |
| WGP-W10-6500L | 3400 | 6500 | LW/Z* | Volvo, parallel kinematics |
| WGP-W10-5400L | 3400 | 5400 | LW/Z* | Cat, kinematics type Z |
| WGP-W10-5700L | 3400 | 5700 | LW/Z* | Cat, kinematics type Z |
| WGP-W10-6000L | 3400 | 6000 | LW/Z* | Cat, kinematics type Z |

*LW/Z - optional interchangeable blade / teeth

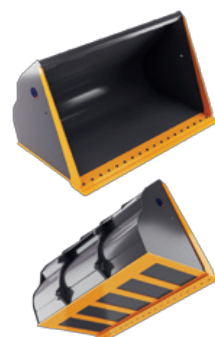


BUCKETS WITH INCREASED CAPACITY

Description: light material bucket max. 600kg/m³; blade HB500; bottom stripes HB400; side bar HB400; direct fit on pins or a quick coupler

| CODE | Width [mm] | Capacity SAE [L] | Option |
|----------------|------------|------------------|--------|
| WLM-W10-7000L | 3400 | 7000 | LW* |
| WLM-W10-10000L | 3700 | 10000 | LW* |
| WLM-W10-12000L | 3700 | 12000 | LW* |
| WLM-W10-14000L | 4000 | 14000 | LW* |
| WLM-W10-16000L | 4500 | 16000 | LW* |

*LW - optional interchangeable blade



WHEEL LOADERS

Group
W10

Operating weight
30 - 40T

ROCK BUCKETS

Description: rock bucket with screwed skids, grate to prevent scattering; ESCO/CAT J tooth system; direct fit on pins or a quick coupler; blades HB500; side bar HB400; bottom stripes HB400; body HB400; sides HB400

| CODE | Width [mm] | Capacity SAE [L] | Option | Dedicated to |
|-----------------|------------|------------------|--------|----------------------------|
| WHD-W10-4500L-V | 3400 | 4500 | Z, S* | Volvo, parallel kinematics |
| WHD-W10-5000L-V | 3400 | 5000 | Z, S* | Volvo, parallel kinematics |
| WHD-W10-4500L-C | 3560 | 4500 | Z, S* | Cat, kinematics type Z |
| WHD-W10-5000L-C | 3560 | 5000 | Z, S* | Cat, kinematics type Z |

*Z/S - teeth, segments

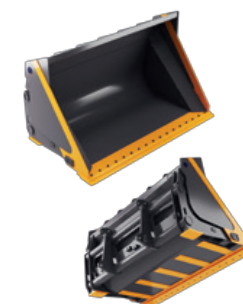


HIGH DUMP BUCKETS

Description: bucket with cylinders placed from outside; blade HB500; bottom stripes HB400; side bar HB400; direct fit on pins or a quick coupler; *spoil density max. 600kg/m³

| CODE | Width [mm] | Capacity SAE [L] | Option | Type |
|----------------|------------|------------------|--------|------------------------|
| WHT-W10-7000L | 3400 | 7000 | LW* | Standard bucket |
| WHT-W10-11000L | 3700 | 11000 | LW* | Light material bucket* |
| WHT-W10-13000L | 4000 | 13000 | LW* | Light material bucket* |

*LW - optional interchangeable blade



LOADER QUICK COUPLERS

Description: quick coupler to meet the standards from Volvo, Komatsu, CAT, JCB, Liebherr and others; hydraulic locking system

| CODE | Quick coupler type | Version |
|-------------|--------------------|-----------|
| WQC-W10-BBM | TYPE VOLVO BBM | Hydraulic |



ADDITIONAL ATTACHMENTS

TIMBER GRAB



ORANGE PEEL GRAB



CLAMSHELL BUCKET



SCRAP SHEARS



ADDITIONAL ATTACHMENTS

DEMOLITION SHEARS



DEMOLISHING AND SORTING GRAB



HYDRAULIC HAMMERS



DEMOLITION ARM



TILTROTATORS



DEKPOL STEEL SP. Z O.O. Terms and Conditions

I. [Introduction]

1. These Terms and Conditions (referred to as „T&C”) are used in the contracts signed between DEKPOL STEEL Sp. z o.o. in Pinczyn, registered at 31 Gajowa street, 83-251 Pinczyn, entered into a commercial register kept by District Court in Gdańsk - North, VII Commercial Division of the National Court Register, under KRS 0000816536 – referred to as “The Seller”. The party with whom The Seller plans to sign the contract is referred to as “The Buyer”, collectively “The Parties” or separately “The Party”
2. Whenever „Contract” is used in T&C, it should be understood to mean a contract of sale, delivery or other contract entered by The Parties, under which The Seller undertakes to deliver to The Buyer construction machine attachments listed in The Seller’s catalogue (hereinafter referred to as “The Goods”).
3. T&C can be amended by The Seller. An amendment is understood as the introduction of changes to existing T&C, as well as the repeal thereof and the introduction of new T&C. The changes are binding for the Buyer from the date of their delivery or from the date of their publication on The Seller’s website (whichever is earlier). The amended T&C apply to orders submitted by The Buyer after the date of delivery of the amended T&C or from the date of their publication on The Seller’s website (whichever comes first).
4. T&C take precedence over the general contractual terms and conditions of The Buyer.
5. T&C are annexed to each Contract.
6. By placing an order or accepting The Seller’s offer, The Buyer accepts T&C in its entirety, unless The Parties agree otherwise in writing.

II. [Conclusion and content of The Contract]

1. If The Buyer has received a commercial offer form The Seller, it is assumed that the offer is valid for 14 days.
2. The Contract is concluded when the Buyer places an order in writing or in an electronic form and the Seller confirms the order in an electronic form. Any changes and supplements to the order require, for its validity, the confirmation by both Parties in an e-mail form. The Contract may also take a written form, a commercial agreement or a protocol from negotiations, provided that they contain all crucial terms and conditions agreed between the Parties and have been signed on behalf of the Seller by persons duly authorized to make declarations of will.
3. Under the Contract, the Seller undertakes to release to the Buyer and transfer to the Buyer the ownership of the Goods located in the Seller’s Catalogue, and the Buyer undertakes to collect the Goods and pay the agreed price to the Seller on the agreed date of payment.
4. The Seller declares that the quality of the Goods being the subject of the Contract shall meet the requirements set forth in European standards or Polish Standards transferring European standards. The Seller places the CE marking on the Goods. All other certificates, attestations and documents confirming that the Goods have certain features and meet specific requirements may be issued based on separate arrangements of the Parties.

III. [Release and receipt of the Goods]

1. Release of the Goods takes place at the date and place indicated by the Buyer in

- the order, unless release of the Goods at the date and place indicated in the order is not possible, of which the Seller shall inform the Buyer. In such a situation, the Parties shall determine another date and/or place of release of the Goods. If the order is to be executed in parts, dates and places of execution of particular parts of the Goods and quantities of the Goods shall be specified in detail in the order.
2. The agreed date of release of the Goods may be changed in case of events for which the Seller is not responsible, in particular if the Buyer changes or supplements the order after its confirmation.
3. The place where the Goods are released is the place of performance of the Contract.
4. All benefits and burdens associated with the Goods and the danger of accidental loss or damage to the Goods pass to the Buyer at the time of their delivery to the Buyer or a third party indicated by the Buyer.
5. The Buyer shall collect the Goods from the Seller in the place indicated in the order or other place agreed by the Parties at least in an e-mail form. Receipt is stated in the protocol of receipt, WZ (delivery note) document or other document confirming transfer, signed by both Parties and containing all arrangements made during the receipt.
6. If the place of release of the Goods is the Seller’s site:
 - a. The Buyer is obliged, at the latest 2 days before planned collection of the Goods, to inform the Seller about the person authorized to collect the Goods (name, surname, ID number, vehicle registration number) and present, at the request of the Seller, a document which will result in authorization of the indicated person to collect the Goods from the Seller’s site. Collection of the Goods in the Seller’s site is possible from Monday to Friday from 7:00 to 15:00, provided that the exact time of collection of the Goods has been agreed with the Seller in advance,
 - b. The Buyer is obliged, upon receipt of the Goods, to check their completeness, technical condition and documents to be issued upon receipt in accordance with the Contract,
 - c. The Buyer or a person authorized to collect the Goods is obliged to comply with the rules of health and safety in force on the premises of the Seller,
 - d. The Buyer is responsible for the loading of the Goods and bear the costs thereof.
7. If the Goods are delivered to the place indicated by the Buyer:
 - a. Benefits and burdens associated with the Goods and the danger of accidental loss or damage to the Goods pass to the Buyer upon handing over of the Goods to the Carrier,
 - b. The Buyer bear all costs of delivering the Goods to the places indicated in the order or other agreed upon by the Parties, including the costs of additional security for the Goods during transport. Information about the necessity to provide additional security for the Goods for the time of transport or other requests concerning transport of the Goods shall be provided by the Buyer to the Seller at the time of placing the order at the latest,
 - c. Before confirming receipt of the Goods on the consignment note, the Buyer is obliged to examine the Goods in the manner adopted for Goods of this Type, in particular check whether the Goods (if not packed) or the packaging (if the Goods are packed) do not bear traces of mechanical damage that may arise during transport. If the Buyer states that during transport the Goods have been lost or damaged, they are obliged to perform all actions necessary to determine the Carrier’s liability and place their reservations in the document referred to in point 5 above, under pain of acknowledging that they take over the Goods without reservations,
 - d. The Buyer is responsible for providing a safe place for the unloading of the Goods as well as for the unloading itself and bears its costs.
8. The Buyer’s employee taking delivery of the Goods from the Seller shall be the Buyer’s representative authorized to make and collect statements relating to the performance of the Contract on behalf of the Buyer. If the Buyer’s employee refuses to submit or collect the declaration of will, a protocol signed by the Seller’s employee shall be drawn up, and the circumstances or arrangements stated in the protocol shall bind the Buyer.
9. The Buyer bears all costs incurred by the Seller resulting from unjustified refusal to take over the Goods, including costs of storage, another transportation, insurance, etc.

IV. [Price]

1. The Buyer pays the Seller the price for the Goods covered by the order, on the basis of a correctly issued invoice by the Seller on the date indicated therein.
2. The prices of the Goods indicated in the Catalogue are net prices and shall be increased by the goods and services tax according to applicable regulations.
3. The Buyer shall pay the price by transfer to the bank account of the Seller indicated in each invoice. Payment of the price shall be made on the date of posting the payment on the bank account of the Seller.
4. The Seller may make the delivery of the Goods conditional on making by the Buyer a prepayment, advance payment or other security, and shall not be liable for delay in delivery of the Goods, if the Buyer does not provide appropriate funds.
5. In the case of failure to pay the price on time, the Seller is entitled to charge statutory interest for each day of delay in payment of the price, demand prepayment for the order already accepted for execution, as well as suspend execution of the next order. Notwithstanding the above, the Buyer shall reimburse the Seller for documented costs of debt collection.
6. The Seller reserves the right of ownership of the Goods until the payment of the entire price by the Buyer.
7. Filing a complaint does not release the Buyer from the obligation to pay the price for the Goods on time.
8. The Buyer may not deduct any receivables towards the Seller with the Seller's receivables towards the Buyer, unless the Parties decide otherwise in writing.

V. [Responsibility of the Parties]

1. The upper limit of the Seller's liability for non-performance or improper performance shall be the price for the Goods that have been ordered. The Seller shall not be liable for damage in the form of lost profits.
2. In case of the Buyer's delay in collecting the Goods, the Seller shall be entitled to a contractual penalty in the amount of 0.1% of the total gross value of the uncollected part of the order, for each day of delay. In the situation described in the previous sentence, the Seller may charge the Buyer with additional costs arising in connection with the delay in receipt of the Goods, in particular with additional costs of transport and storage of the Goods. If the Buyer's delay in receipt of the Goods exceeds 3 days, the Seller is entitled to withdraw from the nonexecuted part of the order. In the event of withdrawal from the order in the manner specified in the preceding paragraphs, the Seller shall charge the Buyer with a contractual penalty calculated from the date of falling into delay until the date of delivery of the notice of withdrawal and with a contractual penalty for withdrawal from execution of a given part of the order in the amount of 10% of the total gross value of the nonexecuted part of the order.

VI. [Warranty and guarantee]

1. The Seller shall be liable to the Buyer on account of the guarantee on the terms and conditions specified in the Warranty Card provided to the Buyer at the latest at the time of release of the Goods. The Seller grants a guarantee for the Goods for the period of 12 months from the date of sale, subject to guarantee for adapters and tooth caps and blades, which as elements subject to natural wear and tear are not subject to guarantee.
2. The Seller's liability under the granted guarantee shall cover only defects resulting from causes inherent in the sold Goods. The guarantee covers repairs of defects of the sold Goods.
3. The rights under the guarantee do not include the right of the Buyer to demand reimbursement of lost benefits and costs incurred in connection with defects in the Goods. The Seller is released from liability under the guarantee in case: (a) damage to the Goods resulting from the Buyer's negligence in unloading, storage, operation, maintenance or exploitation, damage resulting from overloading, negligence in following the instructions, purpose of the Goods, its construction features or damage resulting from an accident and damage resulting from circumstances beyond the Guarantor's control; (b) natural wear and tear of

the Goods and damage resulting from maintenance performed improperly by the Buyer, as well as damage not affecting the operation of the device such as dents or surface scratches, (c) any structural changes made by the Buyer which were not agreed with the Seller in writing and any repairs or modifications made by unauthorized persons, without the Seller's written consent, to damage caused by the use of non-original spare parts without the Seller's written consent to the use of such parts; (d) the lack of possibility to identify the Goods or the absence of a valid Warranty Card (i.e. bearing the signature of the Seller, containing the date of sale, not containing deletions or corrections made by unauthorized persons). A duplicate Warranty Card may be issued upon written request after the Buyer presents a proof of purchase.

4. The Parties exclude the Seller's liability under the warranty.

VII. [Filing a complaint]

1. The Buyer is obliged to immediately, however, no later than within 72 hours from the disclosure of a defect in the Goods, make a written or electronic complaint to the Seller's address: Gajowa 31, 83-251 Pinczyn / e-mail: reklamacjedpl@dekp.pl under pain of losing rights under the guarantee. The notification should be made on the form attached to the Warranty Card. The Buyer is obliged to attach a copy of the Warranty Card to the notification. In addition, if possible, the Buyer should attach to the application documents allowing verification of the application (e.g. photos of damaged Goods).
2. The Seller undertakes to contact the Buyer within 5 working days from the date of receipt of a correct notification and agree with the Buyer how and when the defect should be repaired. The Seller may also provide the Buyer with instructions related to further use of the Goods.
3. If the Seller finds that there is one of the circumstances excluding their liability under the guarantee, the Seller shall inform the Buyer that they are not entitled to rights under the guarantee.
4. In the case of an unjustified call by the Seller to repair the warranty, the costs arising in this connection shall be borne by the Buyer.
5. From the moment of finding a defect by the Buyer, which will be subject to notification, the Buyer should refrain from using the defective Goods and should follow any recommendations of the Seller related to its use. Using the defective Goods against the Seller's recommendations shall result in loss of rights under the guarantee.
6. The choice of the method of removing the defect is up to the Seller.
7. The Buyer undertakes to deliver the Goods intended for replacement or repair to the place indicated by the Seller at their own expense. The Buyer is obliged to deliver the Goods free of dirt (otherwise the Seller shall charge the Buyer with the cost of washing in the amount of PLN 500 net) and protected against the possibility of further defects during transport. After removing the defect, the Goods shall be sent back to the address indicated by the Buyer at their expense, unless the Parties in the course of repair decide otherwise.

VIII. [Final provisions]

1. Any technical documentation, drawings, designs, drafts, sketches, designs of the Goods (hereinafter referred to as: materials) made by the Seller remain the property of the Seller and are protected by copyright. The owner of the property rights to these materials is the Seller. Further distribution of materials made available to the Buyer is prohibited for any purpose.
2. Notwithstanding the contractual penalties reserved in the T&C, the Seller may claim damages in excess of the amount of contractual penalties on general terms and conditions.
3. Possible disputes arising from the Contract shall be considered by the court in whose district the main office of the Seller is located. The applicable law is Polish law.



Dekpol Steel Sp. z o.o.

Gajowa Street 31 • 83-251 Pinczyn • tel. +48 58 560 10 67 www.dekpolsteel.pl
NIP 592 22 79 622 • Regon 385001797 • Nr KRS 0000816536